

## Thrombomodulin / CD141 Rabbit mAb

Catalog No: #57050

Package Size: #57050-1 50ul #57050-2 100ul

Orders: order@signalwayantibody.com

Support: tech@signalwayantibody.com

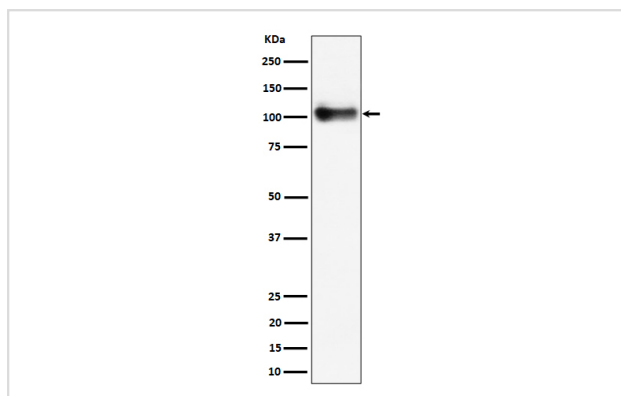
## Description

Product Name	Thrombomodulin / CD141 Rabbit mAb
Host Species	Rabbit
Clonality	Monoclonal
Isotype	Rabbit IgG
Purification	Affinity-chromatography
Applications	WB IHC FC
Species Reactivity	Mouse Rat
Specificity	Thrombomodulin / CD141 Antibody detects endogenous levels of total Thrombomodulin / CD141
Immunogen Description	A synthesized peptide derived from human Thrombomodulin / CD141
Other Names	AHUS6; BDCA3; CD141; CD141 antigen; Fetomodulin; Thbd; THPH12; THRM; Thrombomodulin;
Accession No.	Uniprot:P15306
Calculated MW	105,70kDa
Formulation	Rabbit IgG in phosphate buffered saline , pH 7.4, 150mM NaCl, 0.02% sodium azide and 50% glycerol.
Storage	Store at +4°C short term. Store at -20°C long term. Avoid freeze / thaw cycle.

## Application Details

WB:1:500~1:2000IHC:1:50~1:200FC:1:50

## Images



Western blot analysis of Thrombomodulin / CD141 expression in mouse lung cell lysate.

## Product Description

Thrombomodulin is a specific endothelial cell receptor that forms a 1:1 stoichiometric complex with thrombin. This complex is responsible for the conversion of protein C to the activated protein C (protein Ca). Once evolved, protein Ca scissions the activated cofactors of the coagulation mechanism, factor Va and factor VIIIa, and thereby reduces the amount of thrombin generated.

---

Note: This product is for in vitro research use only and is not intended for use in humans or animals.