

GFPT1 Rabbit mAb

Catalog No: #57052

Package Size: #57052-1 50ul #57052-2 100ul

Orders: order@signalwayantibody.comSupport: tech@signalwayantibody.com

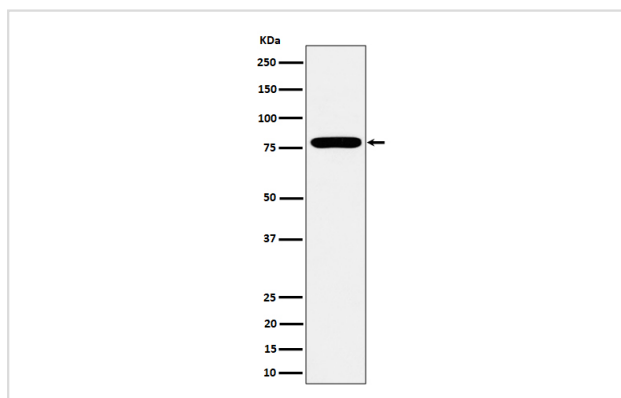
Description

| | |
|-----------------------|--|
| Product Name | GFPT1 Rabbit mAb |
| Host Species | Rabbit |
| Clonality | Monoclonal |
| Isotype | Rabbit IgG |
| Purification | Affinity-chromatography |
| Applications | WB IHC IP |
| Species Reactivity | Human Mouse Rat |
| Specificity | GFPT1 Antibody detects endogenous levels of total GFPT1 |
| Immunogen Description | A synthesized peptide derived from human GFPT1 |
| Other Names | CMS12; CMSTA1; GFA; GFAT; GFAT1; GFAT1m; GFPT; Gfpt1; GFPT1L; Glucosamine--fructose-6-phosphate aminotransferase [isomerizing] 1; Hexosephosphate aminotransferase 1; |
| Accession No. | Uniprot:Q06210 |
| Calculated MW | 79kDa |
| Formulation | Rabbit IgG in phosphate buffered saline , pH 7.4, 150mM NaCl, 0.02% sodium azide and 50% glycerol. |
| Storage | Store at +4°C short term. Store at -20°C long term. Avoid freeze / thaw cycle. |

Application Details

WB:1:500~1:2000IHC:1:50~1:200IP:1:50

Images



Western blot analysis of GFPT1 expression in MCF7 cell lysate.

Product Description

Controls the flux of glucose into the hexosamine pathway. Most likely involved in regulating the availability of precursors for N- and O-linked glycosylation of proteins.

Note: This product is for in vitro research use only and is not intended for use in humans or animals.