

## RAB5C / RABL Rabbit mAb

Catalog No: #57056

Package Size: #57056-1 50ul #57056-2 100ul

Orders: order@signalwayantibody.com

Support: tech@signalwayantibody.com

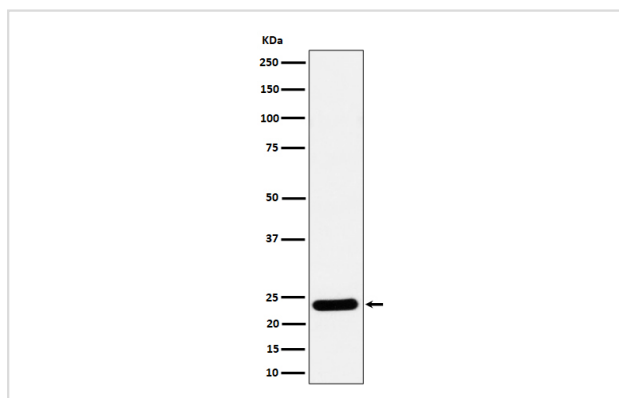
## Description

Product Name	RAB5C / RABL Rabbit mAb
Host Species	Rabbit
Clonality	Monoclonal
Isotype	Rabbit IgG
Purification	Affinity-chromatography
Applications	WB IHC ICC/IF
Species Reactivity	Human Mouse Rat
Specificity	RAB5C / RABL Antibody detects endogenous levels of total RAB5C / RABL
Immunogen Description	A synthesized peptide derived from human RAB5C / RABL
Other Names	L1880; RAB5C; RAB5C, member of RAS oncogene family; RAB5CL; RAB5L; RABL; Ras-related protein Rab-5C;
Accession No.	Uniprot:P51148
Calculated MW	25kDa
Formulation	Rabbit IgG in phosphate buffered saline , pH 7.4, 150mM NaCl, 0.02% sodium azide and 50% glycerol.
Storage	Store at +4°C short term. Store at -20°C long term. Avoid freeze / thaw cycle.

## Application Details

WB:1:500~1:2000IHC:1:50~1:200ICC/IF:1:50~1:200

## Images



Western blot analysis of RAB5C / RABL expression in 293 cell lysate.

## Product Description

Protein transport. Probably involved in vesicular traffic.

---

Note: This product is for in vitro research use only and is not intended for use in humans or animals.