

## ARFRP1 / ARP Rabbit mAb

Catalog No: #57058

Package Size: #57058-1 50ul #57058-2 100ul

Orders: [order@signalwayantibody.com](mailto:order@signalwayantibody.com)Support: [tech@signalwayantibody.com](mailto:tech@signalwayantibody.com)

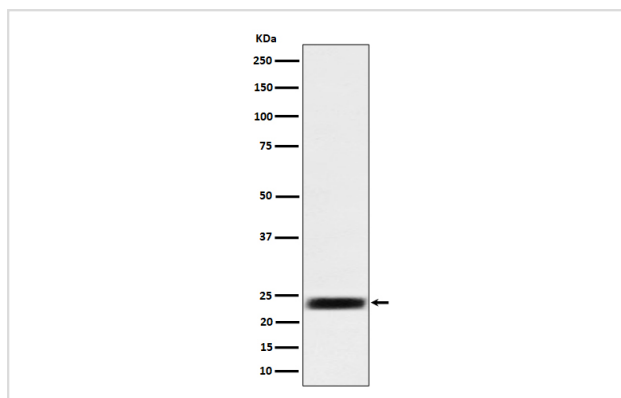
## Description

Product Name	ARFRP1 / ARP Rabbit mAb
Host Species	Rabbit
Clonality	Monoclonal
Isotype	Rabbit IgG
Purification	Affinity-chromatography
Applications	WB ICC/IF
Species Reactivity	Human Mouse Rat
Specificity	ARFRP1 / ARP Antibody detects endogenous levels of total ARFRP1 / ARP
Immunogen Description	A synthesized peptide derived from human ARFRP1 / ARP
Other Names	ARFRP1; ARL18; ARP; ARP1;
Accession No.	Uniprot:Q13795
Calculated MW	23kDa
Formulation	Rabbit IgG in phosphate buffered saline , pH 7.4, 150mM NaCl, 0.02% sodium azide and 50% glycerol.
Storage	Store at +4°C short term. Store at -20°C long term. Avoid freeze / thaw cycle.

## Application Details

WB:1:500~1:2000 ICC/IF:1:50~1:200

## Images



Western blot analysis of ARFRP1 / ARP expression in 293 cell lysate.

## Product Description

Possibly involved in plasma membrane-related signaling events.

---

Note: This product is for in vitro research use only and is not intended for use in humans or animals.