

R Cadherin Rabbit mAb

Catalog No: #57063

Package Size: #57063-1 50ul #57063-2 100ul

Orders: order@signalwayantibody.com

Support: tech@signalwayantibody.com

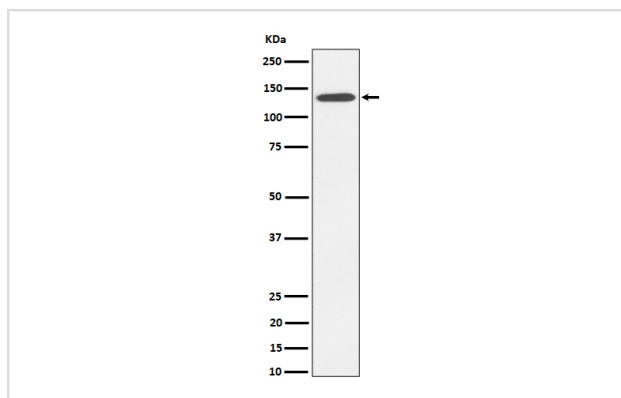
Description

Product Name	R Cadherin Rabbit mAb
Host Species	Rabbit
Clonality	Monoclonal
Isotype	Rabbit IgG
Purification	Affinity-chromatography
Applications	WB
Species Reactivity	Human Mouse Rat
Specificity	R Cadherin Antibody detects endogenous levels of total R Cadherin
Immunogen Description	A synthesized peptide derived from human R Cadherin
Other Names	Cadherin 4; cdh4; R CAD; Retinal cadherin;
Accession No.	Uniprot:P55283
Calculated MW	130kDa
Formulation	Rabbit IgG in phosphate buffered saline , pH 7.4, 150mM NaCl, 0.02% sodium azide and 50% glycerol.
Storage	Store at +4°C short term. Store at -20°C long term. Avoid freeze / thaw cycle.

Application Details

WB: 1:500~1:2000

Images



Western blot analysis of R Cadherin expression in HepG2 cell lysate.

Product Description

Cadherins are calcium dependent cell adhesion proteins. They preferentially interact with themselves in a homophilic manner in connecting cells; cadherins may thus contribute to the sorting of heterogeneous cell types. May play an important role in retinal development.

Note: This product is for in vitro research use only and is not intended for use in humans or animals.