

## HINT1 Rabbit mAb

Catalog No: #57065

Package Size: #57065-1 50ul #57065-2 100ul

Orders: order@signalwayantibody.com

Support: tech@signalwayantibody.com

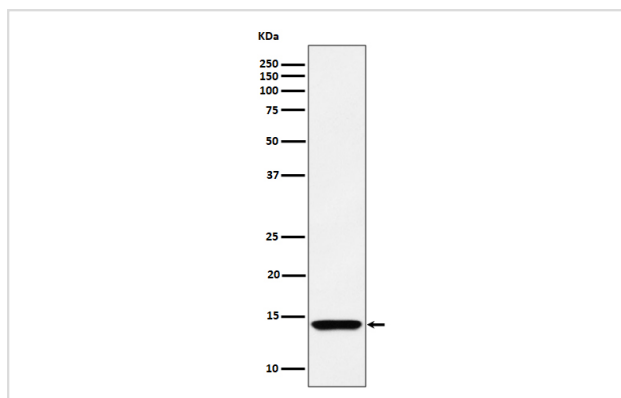
## Description

Product Name	HINT1 Rabbit mAb
Host Species	Rabbit
Clonality	Monoclonal
Isotype	Rabbit IgG
Purification	Affinity-chromatography
Applications	WB IHC ICC/IF
Species Reactivity	Human Mouse Rat
Specificity	HINT1 Antibody detects endogenous levels of total HINT1
Immunogen Description	A synthesized peptide derived from human HINT1
Other Names	HINT1; PKCI1; PRKCNH1; Protein kinase C inhibitor 1;
Accession No.	Uniprot:P49773
Calculated MW	14kDa
Formulation	Rabbit IgG in phosphate buffered saline , pH 7.4, 150mM NaCl, 0.02% sodium azide and 50% glycerol.
Storage	Store at +4°C short term. Store at -20°C long term. Avoid freeze / thaw cycle.

## Application Details

WB:1:500~1:2000IHC:1:50~1:200ICC/IF:1:50~1:200

## Images



Western blot analysis of HINT1 expression in 293 cell lysate.

## Product Description

Hydrolyzes adenosine 5'-monophosphoramidate substrates such as AMP-morpholidate, AMP-N-alanine methyl ester, AMP-alpha-acetyl lysine methyl ester and AMP-NH<sub>2</sub>.

---

Note: This product is for in vitro research use only and is not intended for use in humans or animals.