

MAS1L Rabbit mAb

Catalog No: #57084

Package Size: #57084-1 50ul #57084-2 100ul

Orders: order@signalwayantibody.comSupport: tech@signalwayantibody.com

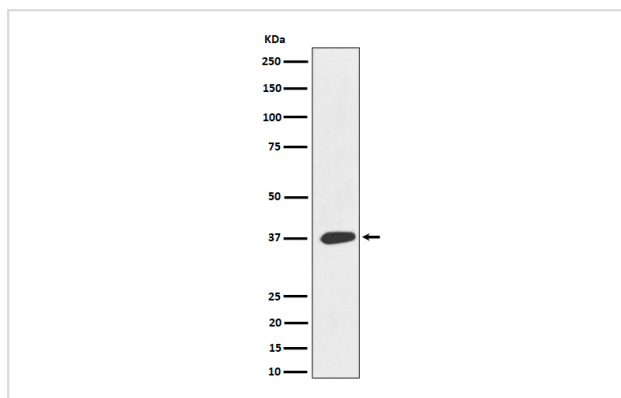
Description

| | |
|-----------------------|--|
| Product Name | MAS1L Rabbit mAb |
| Host Species | Rabbit |
| Clonality | Monoclonal |
| Isotype | Rabbit IgG |
| Purification | Affinity-chromatography |
| Applications | WB IP |
| Species Reactivity | Human |
| Specificity | MAS1L Antibody detects endogenous levels of total MAS1L |
| Immunogen Description | A synthesized peptide derived from human MAS1L |
| Other Names | MAS L; MAS R; MAS1L; MRG; |
| Accession No. | Uniprot:P35410 |
| Calculated MW | 37kDa |
| Formulation | Rabbit IgG in phosphate buffered saline , pH 7.4, 150mM NaCl, 0.02% sodium azide and 50% glycerol. |
| Storage | Store at +4°C short term. Store at -20°C long term. Avoid freeze / thaw cycle. |

Application Details

WB:1:500~1:2000IP:1:50

Images



Western blot analysis of MAS1L expression in 293T cell lysate.

Product Description

Belongs to the G-protein coupled receptor 1 family. Mas subfamily.

Note: This product is for in vitro research use only and is not intended for use in humans or animals.