

## ITPK1 Rabbit mAb

Catalog No: #57090

Package Size: #57090-1 50ul #57090-2 100ul

Orders: order@signalwayantibody.com

Support: tech@signalwayantibody.com

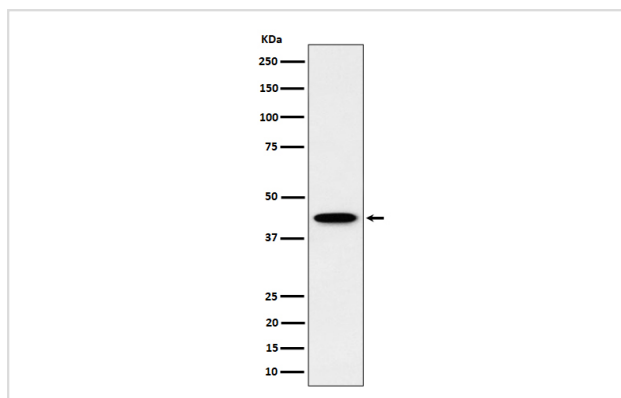
## Description

Product Name	ITPK1 Rabbit mAb
Host Species	Rabbit
Clonality	Monoclonal
Isotype	Rabbit IgG
Purification	Affinity-chromatography
Applications	WB IHC
Species Reactivity	Human
Specificity	ITPK1 Antibody detects endogenous levels of total ITPK1
Immunogen Description	A synthesized peptide derived from human ITPK1
Other Names	Inositol 1; itpk1; ITRPK1;
Accession No.	Uniprot:Q13572
Calculated MW	42kDa
Formulation	Rabbit IgG in phosphate buffered saline , pH 7.4, 150mM NaCl, 0.02% sodium azide and 50% glycerol.
Storage	Store at +4°C short term. Store at -20°C long term. Avoid freeze / thaw cycle.

## Application Details

WB:1:500~1:2000IHC:1:50~1:200

## Images



Western blot analysis of ITPK1 expression in HepG2 cell lysate.

## Product Description

Kinase that can phosphorylate various inositol polyphosphate such as Ins(3,4,5,6)P4 or Ins(1,3,4)P3. Phosphorylates Ins(3,4,5,6)P4 at position 1 to form Ins(1,3,4,5,6)P5.

---

Note: This product is for in vitro research use only and is not intended for use in humans or animals.