

## NDUFA1 Rabbit mAb

Catalog No: #57092

Package Size: #57092-1 50ul #57092-2 100ul

Orders: [order@signalwayantibody.com](mailto:order@signalwayantibody.com)Support: [tech@signalwayantibody.com](mailto:tech@signalwayantibody.com)

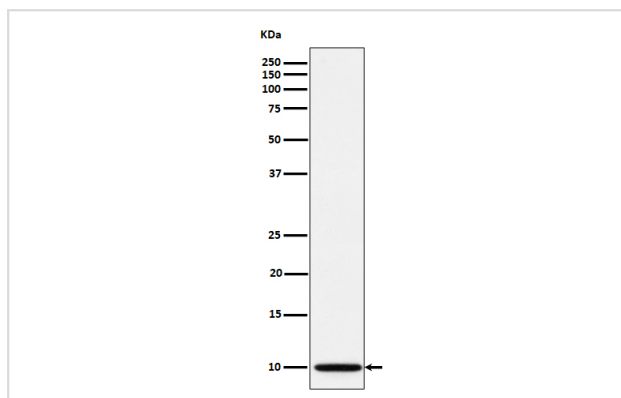
## Description

Product Name	NDUFA1 Rabbit mAb
Host Species	Rabbit
Clonality	Monoclonal
Isotype	Rabbit IgG
Purification	Affinity-chromatography
Applications	WB IHC
Species Reactivity	Human
Specificity	NDUFA1 Antibody detects endogenous levels of total NDUFA1
Immunogen Description	A synthesized peptide derived from human NDUFA1
Other Names	NDUFA1; ZNF183;
Accession No.	Uniprot:O15239
Calculated MW	10kDa
Formulation	Rabbit IgG in phosphate buffered saline , pH 7.4, 150mM NaCl, 0.02% sodium azide and 50% glycerol.
Storage	Store at +4°C short term. Store at -20°C long term. Avoid freeze / thaw cycle.

## Application Details

WB:1:500~1:2000IHC:1:50~1:200

## Images



Western blot analysis of NDUFA1 expression in A673 cell lysate.

## Product Description

Accessory subunit of the mitochondrial membrane respiratory chain NADH dehydrogenase (Complex I), that is believed not to be involved in catalysis. Complex I functions in the transfer of electrons from NADH to the respiratory chain. The immediate electron acceptor for the enzyme is believed to be ubiquinone.

---

Note: This product is for in vitro research use only and is not intended for use in humans or animals.