

## eIF1A Rabbit mAb

Catalog No: #57100

Package Size: #57100-1 50ul #57100-2 100ul

Orders: order@signalwayantibody.com

Support: tech@signalwayantibody.com

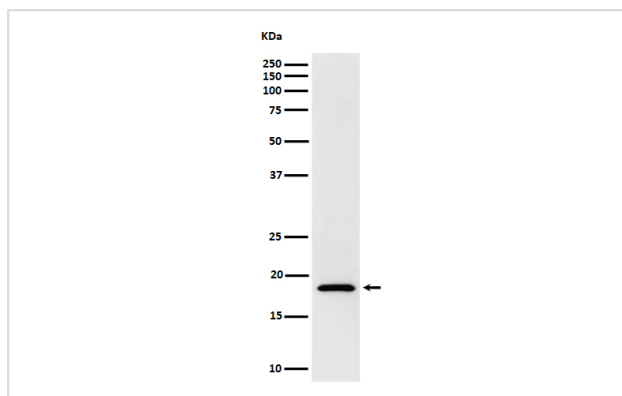
## Description

Product Name	eIF1A Rabbit mAb
Host Species	Rabbit
Clonality	Monoclonal
Isotype	Rabbit IgG
Purification	Affinity-chromatography
Applications	WB IHC ICC/IF IP
Species Reactivity	Human
Specificity	eIF1A Antibody detects endogenous levels of total eIF1A
Immunogen Description	A synthesized peptide derived from human eIF1A
Other Names	EIF1A; EIF1AP1; EIF1AX; EIF4C;
Accession No.	Uniprot:P47813
Calculated MW	18kDa
Formulation	Rabbit IgG in phosphate buffered saline , pH 7.4, 150mM NaCl, 0.02% sodium azide and 50% glycerol.
Storage	Store at +4°C short term. Store at -20°C long term. Avoid freeze / thaw cycle.

## Application Details

WB:1:500~1:2000IHC:1:50~1:200ICC/IF:1:50~1:200IP:1:50

## Images



Western blot analysis of eIF1A expression in Jurkat cell lysate.

## Product Description

eIF1A is an essential eukaryotic translation initiation factor. The protein is required for the binding of the 43S complex (a 40S subunit, eIF2/GTP/Met-tRNA<sub>i</sub> and eIF3) to the 5' end of capped RNA (referenced from entrez gene).

---

Note: This product is for in vitro research use only and is not intended for use in humans or animals.