

## PREB Rabbit mAb

Catalog No: #57101

Package Size: #57101-1 50ul #57101-2 100ul

Orders: [order@signalwayantibody.com](mailto:order@signalwayantibody.com)Support: [tech@signalwayantibody.com](mailto:tech@signalwayantibody.com)

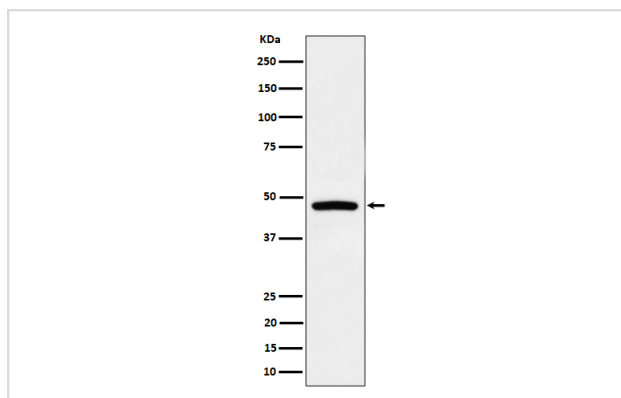
## Description

Product Name	PREB Rabbit mAb
Host Species	Rabbit
Clonality	Monoclonal
Isotype	Rabbit IgG
Purification	Affinity-chromatography
Applications	WB IHC ICC/IF
Species Reactivity	Human
Specificity	PREB Antibody detects endogenous levels of total PREB
Immunogen Description	A synthesized peptide derived from human PREB
Other Names	Preb; SEC12;
Accession No.	Uniprot:Q9HCU5
Calculated MW	45kDa
Formulation	Rabbit IgG in phosphate buffered saline , pH 7.4, 150mM NaCl, 0.02% sodium azide and 50% glycerol.
Storage	Store at +4°C short term. Store at -20°C long term. Avoid freeze / thaw cycle.

## Application Details

WB:1:500~1:2000IHC:1:50~1:200ICC/IF:1:50~1:200

## Images



Western blot analysis of PREB expression in Raji cell lysate.

## Product Description

Was first identified based on its probable role in the regulation of pituitary gene transcription. Binds to the prolactin gene (PRL) promoter and seems to activate transcription (By similarity). Guanine nucleotide exchange factor that activates SARA2. Required for the formation of COPII transport vesicles from the ER.

---

Note: This product is for in vitro research use only and is not intended for use in humans or animals.