

## CECR5 Rabbit mAb

Catalog No: #57108

Package Size: #57108-1 50ul #57108-2 100ul

Orders: [order@signalwayantibody.com](mailto:order@signalwayantibody.com)Support: [tech@signalwayantibody.com](mailto:tech@signalwayantibody.com)

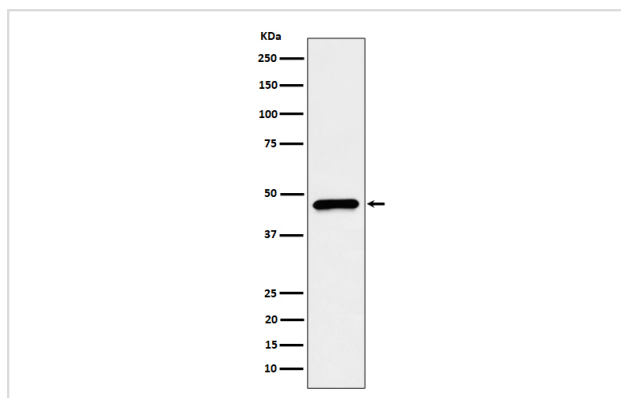
## Description

Product Name	CECR5 Rabbit mAb
Host Species	Rabbit
Clonality	Monoclonal
Isotype	Rabbit IgG
Purification	Affinity-chromatography
Applications	WB ICC/IF
Species Reactivity	Human
Specificity	CECR5 Antibody detects endogenous levels of total CECR5
Immunogen Description	A synthesized peptide derived from human CECR5
Other Names	Cecr5;
Accession No.	Uniprot:Q9BXW7
Calculated MW	46kDa
Formulation	Rabbit IgG in phosphate buffered saline , pH 7.4, 150mM NaCl, 0.02% sodium azide and 50% glycerol.
Storage	Store at +4°C short term. Store at -20°C long term. Avoid freeze / thaw cycle.

## Application Details

WB:1:500~1:2000 ICC/IF:1:50~1:200

## Images



Western blot analysis of CECR5 expression in HepG2 cell lysate.

## Product Description

Candidate gene for the Cat Eye Syndrome (CES), a developmental disorder associated with the duplication of a 2 Mb region of 22q11.2. Duplication usually takes in the form of a supernumerary bisatellited isodicentric chromosome, resulting in four copies of the region (represents an inv dup(22)(q11)). CES is characterized clinically by the combination of coloboma of the iris and anal atresia with fistula, downslanting palpebral fissures, preauricular tags and/or pits, frequent occurrence of heart and renal malformations, and normal or near-normal mental development.

---

Note: This product is for in vitro research use only and is not intended for use in humans or animals.