

## NSDHL Rabbit mAb

Catalog No: #57111



Package Size: #57111-1 50ul #57111-2 100ul

Orders: [order@signalwayantibody.com](mailto:order@signalwayantibody.com)Support: [tech@signalwayantibody.com](mailto:tech@signalwayantibody.com)

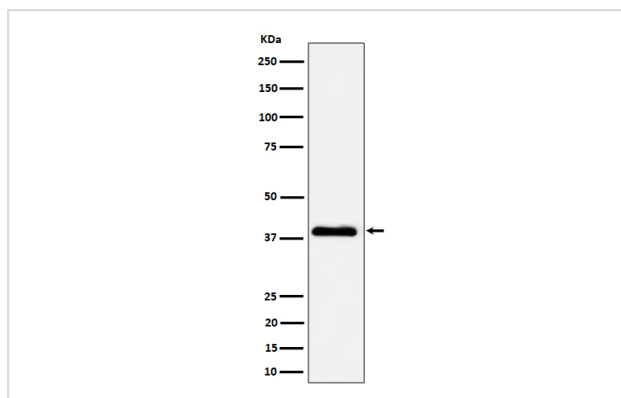
## Description

|                       |  |
|-----------------------|--|
| Product Name          | NSDHL Rabbit mAb   |
| Host Species          | Rabbit   |
| Clonality             | Monoclonal   |
| Isotype               | Rabbit IgG   |
| Purification          | Affinity-chromatography  |
| Applications          | WB IHC ICC/IF  |
| Species Reactivity    | Human  |
| Specificity           | NSDHL Antibody detects endogenous levels of total NSDHL  |
| Immunogen Description | A synthesized peptide derived from human NSDHL   |
| Other Names           | H105E3; NSDHL; SDR31E1; XAP104;  |
| Accession No.         | Uniprot:Q15738   |
| Calculated MW         | 38kDa  |
| Formulation           | Rabbit IgG in phosphate buffered saline , pH 7.4, 150mM NaCl, 0.02% sodium azide and 50% glycerol. |
| Storage               | Store at +4°C short term. Store at -20°C long term. Avoid freeze / thaw cycle.                     |

## Application Details

WB:1:500~1:2000IHC:1:50~1:200ICC/IF:1:50~1:200

## Images



Western blot analysis of NSDHL expression in A431 cell lysate.

## Product Description

Catalyzes the NAD(P)<sup>+</sup>-dependent oxidative decarboxylation of the C4 methyl groups of 4- $\alpha$ -carboxysterols in post-squalene cholesterol biosynthesis (By similarity).

---

Note: This product is for in vitro research use only and is not intended for use in humans or animals.