

## CLIC4 Rabbit mAb

Catalog No: #57118

Package Size: #57118-1 50ul #57118-2 100ul

Orders: order@signalwayantibody.com

Support: tech@signalwayantibody.com

## Description

Product Name	CLIC4 Rabbit mAb
Host Species	Rabbit
Clonality	Monoclonal
Isotype	Rabbit IgG
Purification	Affinity-chromatography
Applications	WB IHC ICC/IF IP FC
Species Reactivity	Human Mouse Rat
Specificity	CLIC4 Antibody detects endogenous levels of total CLIC4
Immunogen Description	A synthesized peptide derived from human CLIC4
Other Names	Chloride intracellular channel 4; Clic4; CLIC4L; HUH1; MC3S5; mtCLIC; p64H1;
Accession No.	Uniprot:Q9Y696
Calculated MW	29kDa
Formulation	Rabbit IgG in phosphate buffered saline , pH 7.4, 150mM NaCl, 0.02% sodium azide and 50% glycerol.
Storage	Store at +4°C short term. Store at -20°C long term. Avoid freeze / thaw cycle.

## Application Details

WB:1:500~1:2000

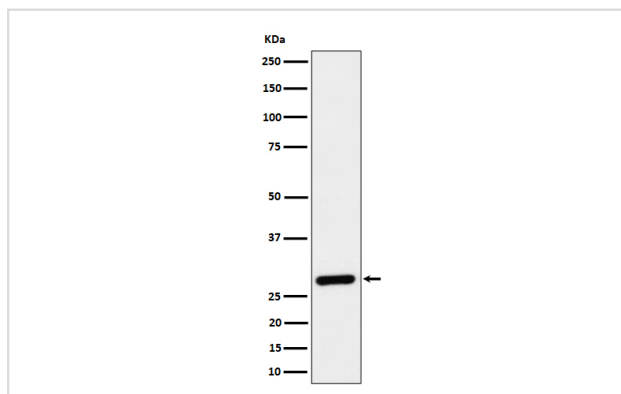
IHC:1:50~1:200

ICC/IF:1:50~1:200

IP:1:50

FC:1:50

## Images



Western blot analysis of CLIC4 expression in 293 cell lysate.

## Product Description

Can insert into membranes and form poorly selective ion channels that may also transport chloride ions. Channel activity depends on the pH.

Membrane insertion seems to be redox-regulated and may occur only under oxidizing conditions. Promotes cell-surface expression of HRH3. Has alternate cellular functions like a potential role in angiogenesis or in maintaining apical-basolateral membrane polarity during mitosis and cytokinesis. Could also promote endothelial cell proliferation and regulate endothelial morphogenesis (tubulogenesis).

---

Note: This product is for in vitro research use only and is not intended for use in humans or animals.