

CB029 rabbit pAb

Catalog No: #44261



Package Size: #44261-1 50ul #44261-2 100ul

Orders: order@signalwayantibody.comSupport: tech@signalwayantibody.com

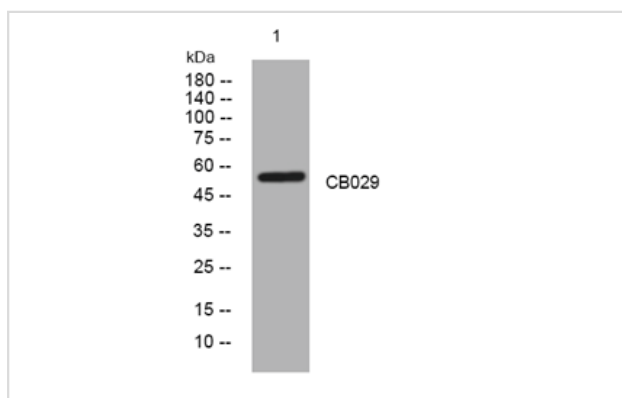
Description

Product Name	CB029 rabbit pAb
Host Species	Rabbit
Clonality	Polyclonal
Isotype	IgG
Purification	The antibody was affinity-purified from rabbit serum by affinity-chromatography using specific immunogen.
Applications	WB
Species Reactivity	Human; Mouse;Rat
Immunogen Description	Synthesized peptide derived from human CB029
Accession No.	Swiss Prot:Q9UKZ1GeneID:55571
Calculated MW	56kD
Concentration	1 mg/ml
Formulation	Liquid in PBS containing 50% glycerol, 0.5% BSA and 0.02% sodium azide.
Storage	Store at -20°C/1 year

Application Details

WB 1αO 500-2000

Images



Western blot analysis of lysates from HEK293 cells, primary antibody was diluted at 1:1000, 4° over night

Note: This product is for in vitro research use only and is not intended for use in humans or animals.