

## CAF-1 p60 Polyclonal Antibody

Catalog No: #44257



Package Size: #44257-1 50ul #44257-2 100ul

Orders: [order@signalwayantibody.com](mailto:order@signalwayantibody.com)Support: [tech@signalwayantibody.com](mailto:tech@signalwayantibody.com)

## Description

Product Name	CAF-1 p60 Polyclonal Antibody
Host Species	Rabbit
Clonality	Polyclonal
Isotype	IgG
Purification	The antibody was affinity-purified from rabbit antiserum by affinity-chromatography using epitope-specific immunogen.
Applications	WB;IHC;IF/ICC;ELISA
Species Reactivity	Human; Mouse;Rat
Specificity	CAF-1 p60 Polyclonal Antibody detects endogenous levels of CAF-1 p60 protein.
Immunogen Description	The antiserum was produced against synthesized peptide derived from human CAF1B.
Accession No.	Gene Name:CHAF1BSwiss-Prot#:Q13112NCBI Gene ID:8208
Calculated MW	61kD
Concentration	1 mg/ml
Formulation	Liquid in PBS containing 50% glycerol, 0.5% BSA and 0.02% sodium azide.
Storage	Store at -20°C/1 year

## Application Details

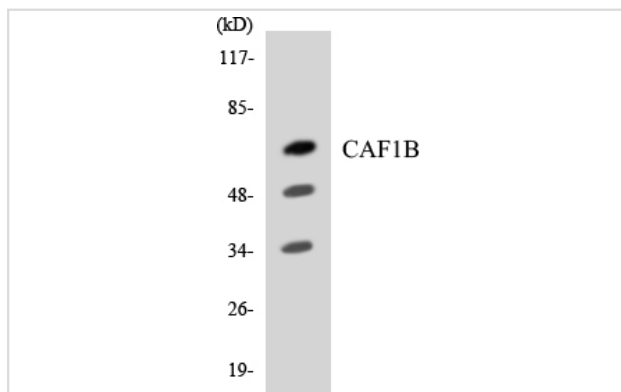
Western Blot: 1/500 - 1/2000.

Immunohistochemistry: 1/100 - 1/300.

Immunofluorescence: 1/200 - 1/1000.

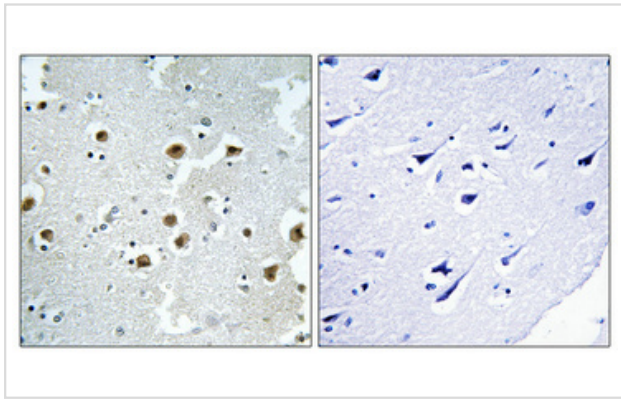
ELISA: 1/20000.

## Images



Western blot analysis of the lysates from RAW264.7 cells using CAF1B antibody.

Immunohistochemical analysis of paraffin-embedded Human brain.



---

Note: This product is for in vitro research use only and is not intended for use in humans or animals.