

Chk1 (Phospho-Ser280) Rabbit mAb

Catalog No: #14293



Package Size: #14293-1 50ul #14293-2 100ul

Orders: order@signalwayantibody.com

Support: tech@signalwayantibody.com

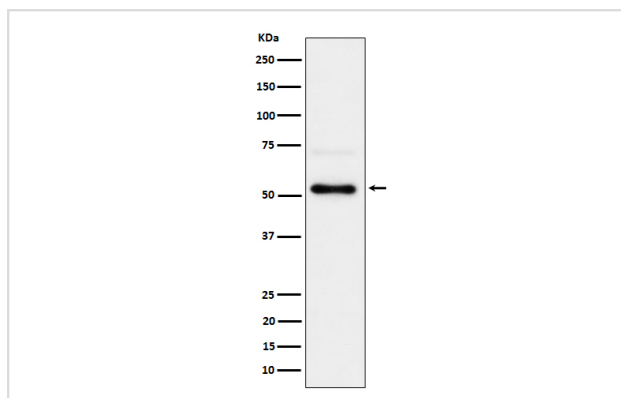
Description

Product Name	Chk1 (Phospho-Ser280) Rabbit mAb
Host Species	Rabbit
Clonality	Monoclonal
Isotype	Rabbit IgG
Purification	Affinity-chromatography
Applications	WB
Species Reactivity	Human
Specificity	Phospho-Chk1 (S280) Antibody detects endogenous levels of total Phospho-Chk1 (S280)
Immunogen Description	A synthesized peptide derived from human Phospho-Chk1 (S280)
Other Names	Checkpoint kinase 1; Chek1; Chk1; rad27;
Accession No.	O14757
Calculated MW	54kDa
Formulation	Rabbit IgG in phosphate buffered saline , pH 7.4, 150mM NaCl, 0.02% sodium azide and 50% glycerol.
Storage	Store at -20°C for long term preservation (recommended). Store at 4°C for short term use.

Application Details

WB 1:500~1:2000

Images



Western blot analysis of Phospho-Chk1 (S280) expression in 293T treated with Calyculin A cell lysate.

Background

Serine/threonine-protein kinase which is required for checkpoint-mediated cell cycle arrest and activation of DNA repair in response to the presence of DNA damage or unrepllicated DNA. May also negatively regulate cell cycle progression during unperturbed cell cycles.

Note: This product is for in vitro research use only and is not intended for use in humans or animals.