

EGFR (Phospho-Tyr845) Rabbit mAb

Catalog No: #14294

Package Size: #14294-1 50ul #14294-2 100ul

Orders: order@signalwayantibody.comSupport: tech@signalwayantibody.com

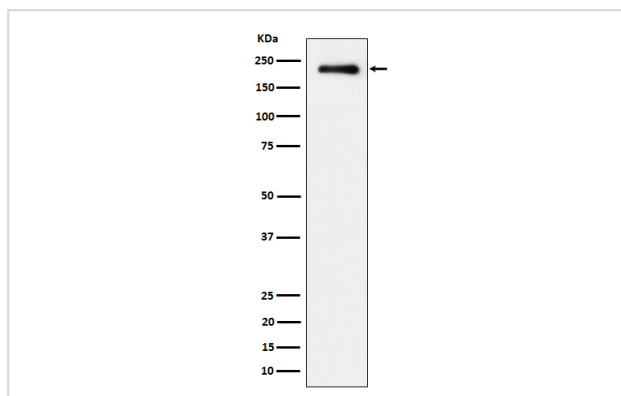
Description

Product Name	EGFR (Phospho-Tyr845) Rabbit mAb
Host Species	Rabbit
Clonality	Monoclonal
Isotype	Rabbit IgG
Purification	Affinity-chromatography
Applications	WB ICC/IF
Species Reactivity	Human
Specificity	Phospho-EGFR (Y845) Antibody detects endogenous levels of total Phospho-EGFR (Y845)
Immunogen Description	A synthesized peptide derived from human Phospho-EGFR (Y845)
Other Names	EGFR; ERBB; ERBB1; Errp; HER1; mENA; NISBD2; PIG61; SA7; wa2; Wa5;
Accession No.	P00533
Calculated MW	175kDa
Formulation	Rabbit IgG in phosphate buffered saline , pH 7.4, 150mM NaCl, 0.02% sodium azide and 50% glycerol.
Storage	Store at -20°C for long term preservation (recommended). Store at 4°C for short term use.

Application Details

WB 1:500~1:2000 ICC/IF 1:50~1:200

Images



Western blot analysis of Phospho-EGFR (Y845) expression in A431 treated with EGF cell lysate.

Background

Receptor tyrosine kinase binding ligands of the EGF family and activating several signaling cascades to convert extracellular cues into appropriate cellular responses.

Note: This product is for in vitro research use only and is not intended for use in humans or animals.