

ErbB2(Phospho-Tyr1221 / Tyr1222) Rabbit mAb

Catalog No: #14295



Package Size: #14295-1 50ul #14295-2 100ul

Orders: order@signalwayantibody.com

Support: tech@signalwayantibody.com

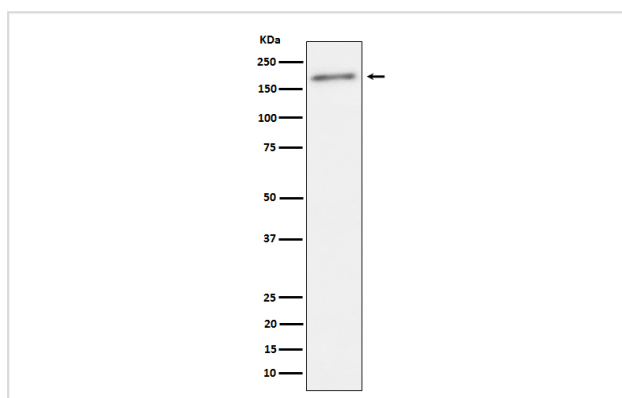
Description

Product Name	ErbB2(Phospho-Tyr1221 / Tyr1222) Rabbit mAb
Host Species	Rabbit
Clonality	Monoclonal
Isotype	Rabbit IgG
Purification	Affinity-chromatography
Applications	WB
Species Reactivity	Human
Specificity	Phospho-ErbB2(Y1221 + Y1222) Antibody detects endogenous levels of total Phospho-ErbB2(Y1221 + Y1222)
Immunogen Description	A synthesized peptide derived from human Phospho-ErbB2(Y1221 + Y1222)
Other Names	CD340; CerbB2; Erb b2 receptor tyrosine kinase 2; ERBB2; HER2; Herstatin; Human epidermal growth factor receptor 2; MLN19; NEU; NGL; Proto-oncogene Neu; Receptor tyrosine-protein kinase erbB-2; Tyrosine kinase type cell surface receptor HER2;
Accession No.	P04626
Calculated MW	185kDa
Formulation	Rabbit IgG in phosphate buffered saline , pH 7.4, 150mM NaCl, 0.02% sodium azide and 50% glycerol.
Storage	Store at -20°C for long term preservation (recommended). Store at 4°C for short term use.

Application Details

WB 1:500~1:2000

Images



Western blot analysis of Phospho-ErbB2(Y1221 + Y1222) expression in SKBR3 cell lysate.

Background

Protein tyrosine kinase that is part of several cell surface receptor complexes, but that apparently needs a coreceptor for ligand binding. Essential component of a neuregulin-receptor complex, although neuregulins do not interact with it alone. GP30 is a potential ligand for this receptor.

Note: This product is for in vitro research use only and is not intended for use in humans or animals.