

LRP6 (Phospho-Ser1490) Rabbit mAb

Catalog No: #14296



Package Size: #14296-1 50ul #14296-2 100ul

Orders: order@signalwayantibody.com

Support: tech@signalwayantibody.com

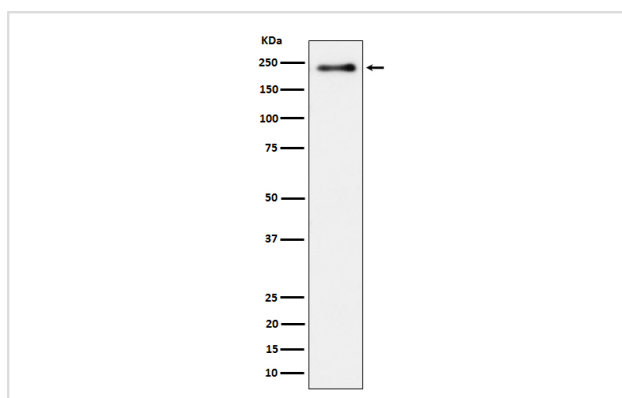
Description

Product Name	LRP6 (Phospho-Ser1490) Rabbit mAb
Host Species	Rabbit
Clonality	Monoclonal
Isotype	Rabbit IgG
Purification	Affinity-chromatography
Applications	WB
Species Reactivity	Human
Specificity	Phospho-LRP6 (S1490) Antibody detects endogenous levels of total Phospho-LRP6 (S1490)
Immunogen Description	A synthesized peptide derived from human Phospho-LRP6 (S1490)
Other Names	Low-density lipoprotein receptor-related protein 7;
Accession No.	O75581
Calculated MW	210, 180kDa
Formulation	Rabbit IgG in phosphate buffered saline , pH 7.4, 150mM NaCl, 0.02% sodium azide and 50% glycerol.
Storage	Store at -20°C for long term preservation (recommended). Store at 4°C for short term use.

Application Details

WB 1:500~1:2000

Images



Western blot analysis of Phospho-LRP6 (S1490) expression in heLa treated with Calyculin cell lysate.

Background

Acts as a coreceptor with members of the frizzled family of seven-transmembrane spanning receptors to transduce signal by Wnt proteins (PubMed:11336703, PubMed:11448771, PubMed:15778503, PubMed:11719191, PubMed:15908424, PubMed:16252235).

Note: This product is for in vitro research use only and is not intended for use in humans or animals.