

## Rb (Phospho-Ser780) Rabbit mAb

Catalog No: #14298



Package Size: #14298-1 50ul #14298-2 100ul

Orders: order@signalwayantibody.com

Support: tech@signalwayantibody.com

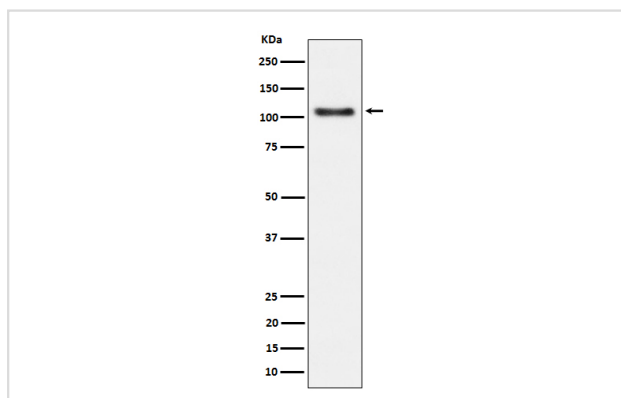
## Description

Product Name	Rb (Phospho-Ser780) Rabbit mAb
Host Species	Rabbit
Clonality	Monoclonal
Isotype	Rabbit IgG
Purification	Affinity-chromatography
Applications	WB
Species Reactivity	Human Mouse
Specificity	Phospho-Rb (S780) Antibody detects endogenous levels of total Phospho-Rb (S780)
Immunogen Description	A synthesized peptide derived from human Phospho-Rb (S780)
Other Names	OSRC; Osteosarcoma; P105RB; PP105; pp110; PPP1R130;Prepro retinoblastoma associated protein; RB transcriptional corepressor 1; RB1; Retinoblastoma 1; Retinoblastoma susceptibility protein;
Accession No.	P06400
Calculated MW	106kDa
Formulation	Rabbit IgG in phosphate buffered saline , pH 7.4, 150mM NaCl, 0.02% sodium azide and 50% glycerol.
Storage	Store at -20°C for long term preservation (recommended). Store at 4°C for short term use.

## Application Details

WB 1:500~1:2000

## Images



Western blot analysis of Phospho-Rb (S780) expression in K562 cell lysate.

## Background

Key regulator of entry into cell division that acts as a tumor suppressor. Promotes G0-G1 transition when phosphorylated by CDK3/cyclin-C. Acts as a transcription repressor of E2F1 target genes.

---

Note: This product is for in vitro research use only and is not intended for use in humans or animals.