

Phospho-Vimentin (S39) Rabbit mAb

Catalog No: #14301



Package Size: #14301-1 50ul #14301-2 100ul

Orders: order@signalwayantibody.comSupport: tech@signalwayantibody.com

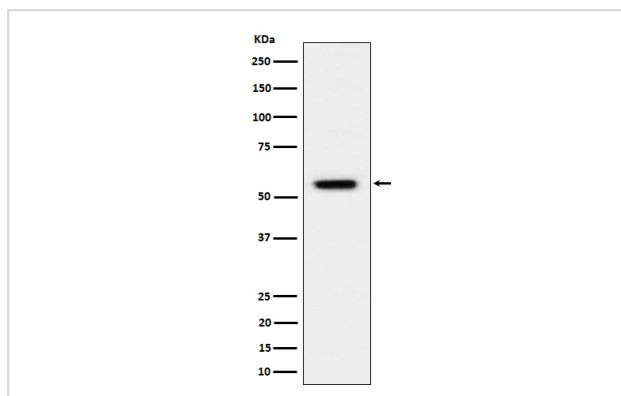
Description

Product Name	Phospho-Vimentin (S39) Rabbit mAb
Host Species	Rabbit
Clonality	Monoclonal
Isotype	Rabbit IgG
Purification	Affinity-chromatography
Applications	WB
Species Reactivity	Human Mouse Rat
Specificity	Phospho-Vimentin (S39) Antibody detects endogenous levels of total Phospho-Vimentin (S39)
Immunogen Description	A synthesized peptide derived from human Phospho-Vimentin (S39)
Other Names	VIM; VIME; Vimentin;
Accession No.	P08670
Calculated MW	54kDa
Formulation	Rabbit IgG in phosphate buffered saline , pH 7.4, 150mM NaCl, 0.02% sodium azide and 50% glycerol.
Storage	Store at -20°C for long term preservation (recommended). Store at 4°C for short term use.

Application Details

WB 1:500~1:2000

Images



Western blot analysis of Phospho-Vimentin (S39) expression in HeLa treated with Calyculin A cell lysate.

Background

Phospho-Vimentin (S39) Antibody detects endogenous levels of total Phospho-Vimentin (S39)

Note: This product is for in vitro research use only and is not intended for use in humans or animals.