

## AKT1/2/3 Rabbit mAb

Catalog No: #57129

Package Size: #57129-1 50ul #57129-2 100ul

Orders: order@signalwayantibody.com

Support: tech@signalwayantibody.com

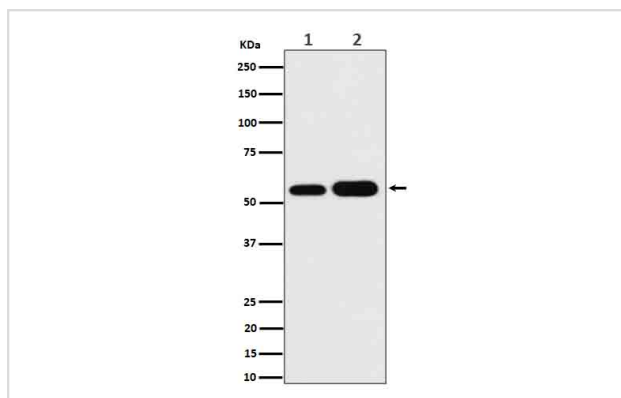
## Description

Product Name	AKT1/2/3 Rabbit mAb
Host Species	Rabbit
Clonality	Monoclonal
Isotype	Rabbit IgG
Purification	Affinity-chromatography
Applications	WB IHC ICC/IF IP FC
Species Reactivity	Human Mouse Rat
Specificity	AKT1 + AKT2 + AKT3 Antibody detects endogenous levels of total AKT1 + AKT2 + AKT3
Immunogen Description	A synthesized peptide derived from human AKT1 + AKT2 + AKT3
Other Names	PKB;RAC;PRKBA;PKB-ALPHA;RAC-ALPHA; AKT1 ; AKT2; AKT3; Akt1/2/3; pan Akt;
Accession No.	P31749/P31751/Q9Y243
Calculated MW	56kDa
Formulation	Rabbit IgG in phosphate buffered saline , pH 7.4, 150mM NaCl, 0.02% sodium azide and 50% glycerol.
Storage	Store at -20°C for long term preservation (recommended). Store at 4°C for short term use.

## Application Details

WB 1:500~1:2000 IHC 1:50~1:100 ICC/IF 1:50~1:100 IP 1:50 FC 1:50

## Images



Western blot analysis of AKT1 + AKT2 + AKT3 expression in (1) HeLa cell lysate;(2) A549 cell lysate.

## Background

A synthesized peptide derived from human AKT1 + AKT2 + AKT3

---

Note: This product is for in vitro research use only and is not intended for use in humans or animals.