

## GAS2 Rabbit mAb

Catalog No: #57131

Package Size: #57131-1 50ul #57131-2 100ul

Orders: [order@signalwayantibody.com](mailto:order@signalwayantibody.com)Support: [tech@signalwayantibody.com](mailto:tech@signalwayantibody.com)

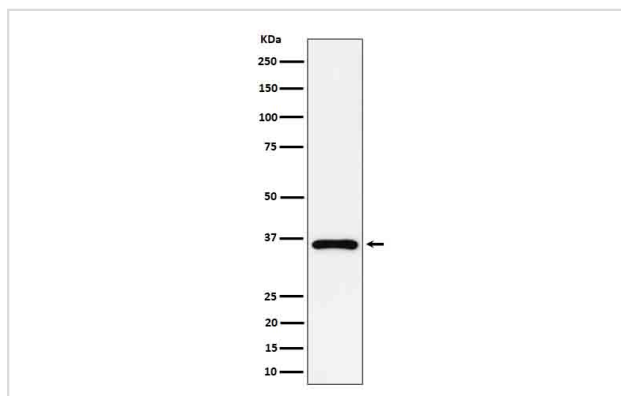
## Description

Product Name	GAS2 Rabbit mAb
Host Species	Rabbit
Clonality	Monoclonal
Isotype	Rabbit IgG
Purification	Affinity-chromatography
Applications	WB IHC
Species Reactivity	Human Mouse
Specificity	GAS2 Antibody detects endogenous levels of total GAS2
Other Names	Gas2; Growth arrest specific 2;
Accession No.	O43903
Calculated MW	35kDa
Formulation	Rabbit IgG in phosphate buffered saline , pH 7.4, 150mM NaCl, 0.02% sodium azide and 50% glycerol.
Storage	Store at -20°C for long term preservation (recommended). Store at 4°C for short term use.

## Application Details

WB 1:500~1:2000 IHC 1:50~1:100

## Images



Western blot analysis of GAS2 expression in Jurkat cell lysate.

## Background

May play a role in apoptosis by acting as a cell death substrate for caspases. Is cleaved during apoptosis and the cleaved form induces dramatic rearrangements of the actin cytoskeleton and potent changes in the shape of the affected cells. May be involved in the membrane ruffling process.

Note: This product is for in vitro research use only and is not intended for use in humans or animals.