

## HN1 Rabbit mAb

Catalog No: #57132



Package Size: #57132-1 50ul #57132-2 100ul

Orders: [order@signalwayantibody.com](mailto:order@signalwayantibody.com)Support: [tech@signalwayantibody.com](mailto:tech@signalwayantibody.com)

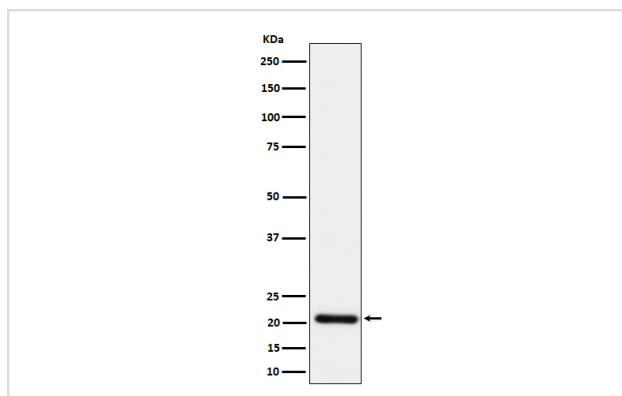
## Description

Product Name	HN1 Rabbit mAb
Host Species	Rabbit
Clonality	Monoclonal
Isotype	Rabbit IgG
Purification	Affinity-chromatography
Applications	WB FC
Species Reactivity	Human Mouse Rat
Specificity	HN1 Antibody detects endogenous levels of total HN1
Immunogen Description	A synthesized peptide derived from human HN1
Other Names	ARM2; HN1; HN1A;
Accession No.	Q9UK76
Calculated MW	21kDa
Formulation	Rabbit IgG in phosphate buffered saline , pH 7.4, 150mM NaCl, 0.02% sodium azide and 50% glycerol.
Storage	Store at -20°C for long term preservation (recommended). Store at 4°C for short term use.

## Application Details

WB 1:500~1:2000 FC 1:50

## Images



Western blot analysis of HN1 expression in HeLa cell lysate.

## Background

Modulates negatively AKT-mediated GSK3B signaling (PubMed:21323578, PubMed:22155408).

---

Note: This product is for in vitro research use only and is not intended for use in humans or animals.