

## SEC14L2 / TAP Rabbit mAb

Catalog No: #57136



Package Size: #57136-1 50ul #57136-2 100ul

Orders: order@signalwayantibody.com

Support: tech@signalwayantibody.com

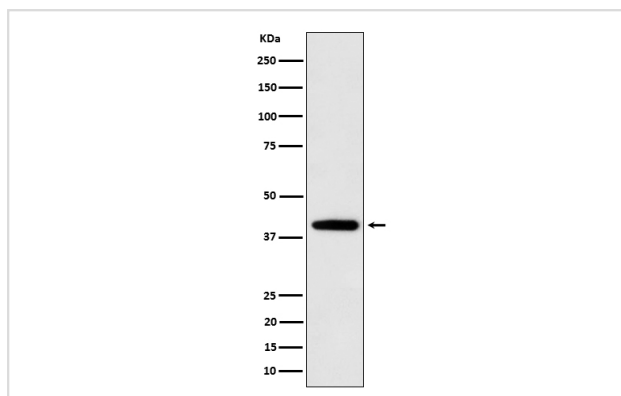
## Description

Product Name	SEC14L2 / TAP Rabbit mAb
Host Species	Rabbit
Clonality	Monoclonal
Isotype	Rabbit IgG
Purification	Affinity-chromatography
Applications	WB IHC
Species Reactivity	Human Mouse Rat
Specificity	SEC14L2 / TAP Antibody detects endogenous levels of total SEC14L2 / TAP
Immunogen Description	A synthesized peptide derived from human SEC14L2 / TAP
Other Names	hTAP; SEC14 like 2; Sec14l2; SPF; Squalene transfer protein; TAP; TAP1;
Accession No.	O76054
Calculated MW	40kDa
Formulation	Rabbit IgG in phosphate buffered saline , pH 7.4, 150mM NaCl, 0.02% sodium azide and 50% glycerol.
Storage	Store at -20°C for long term preservation (recommended). Store at 4°C for short term use.

## Application Details

WB 1:500~1:2000 IHC 1:50~1:200

## Images



Western blot analysis of SEC14L2 / TAP expression in U87-MG cell lysate.

## Background

Carrier protein. Binds to some hydrophobic molecules and promotes their transfer between the different cellular sites. Binds with high affinity to alpha-tocopherol.

---

Note: This product is for in vitro research use only and is not intended for use in humans or animals.