

## PDGF B Rabbit mAb

Catalog No: #57137

Package Size: #57137-1 50ul #57137-2 100ul

Orders: order@signalwayantibody.com

Support: tech@signalwayantibody.com

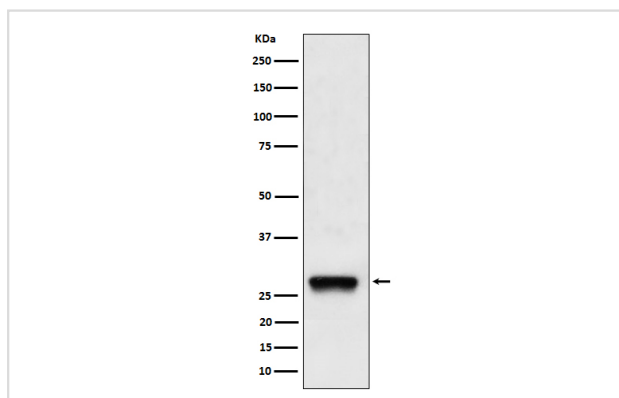
## Description

Product Name	PDGF B Rabbit mAb
Host Species	Rabbit
Clonality	Monoclonal
Isotype	Rabbit IgG
Purification	Affinity-chromatography
Applications	WB
Species Reactivity	Human Mouse Rat
Specificity	PDGF B Antibody detects endogenous levels of total PDGF B
Immunogen Description	A synthesized peptide derived from human PDGF B
Other Names	PDGF2; Pdgfb; Platelet derived growth factor 2; Platelet derived growth factor B chain; Platelet derived growth factor beta; SIS; SSV;
Accession No.	P01127
Calculated MW	27kDa
Formulation	Rabbit IgG in phosphate buffered saline , pH 7.4, 150mM NaCl, 0.02% sodium azide and 50% glycerol.
Storage	Store at -20°C for long term preservation (recommended). Store at 4°C for short term use.

## Application Details

WB 1:500~1:2000

## Images



Western blot analysis of PDGF B expression in A375 cell lysate.

## Background

Growth factor that plays an essential role in the regulation of embryonic development, cell proliferation, cell migration, survival and chemotaxis. Potent mitogen for cells of mesenchymal origin (PubMed:26599395).

---

Note: This product is for in vitro research use only and is not intended for use in humans or animals.