

C1QA Rabbit mAb

Catalog No: #57138

Package Size: #57138-1 50ul #57138-2 100ul

Orders: order@signalwayantibody.com

Support: tech@signalwayantibody.com

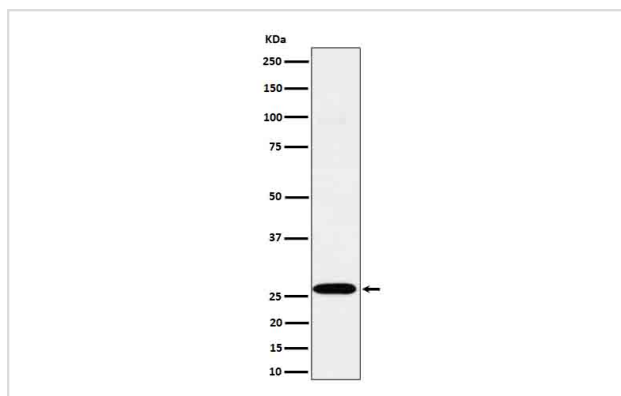
Description

Product Name	C1QA Rabbit mAb
Host Species	Rabbit
Clonality	Monoclonal
Isotype	Rabbit IgG
Purification	Affinity-chromatography
Applications	WB IHC
Species Reactivity	Human Rat
Specificity	C1QA Antibody detects endogenous levels of total C1QA
Other Names	C1qa; Complement C1q subcomponent subunit A; Complement component 1 q subcomponent A chain; Complement component 1 q subcomponent alpha polypeptide
Accession No.	P02745
Calculated MW	30kDa
Formulation	Rabbit IgG in phosphate buffered saline , pH 7.4, 150mM NaCl, 0.02% sodium azide and 50% glycerol.
Storage	Store at -20°C for long term preservation (recommended). Store at 4°C for short term use.

Application Details

WB 1:500~1:2000 IHC 1:50~1:200

Images



Western blot analysis of C1QA expression in C6 cell lysate.

Background

C1q associates with the proenzymes C1r and C1s to yield C1, the first component of the serum complement system. The collagen-like regions of C1q interact with the Ca²⁺-dependent C1r(2)C1s(2) proenzyme complex, and efficient activation of C1 takes place on interaction of the globular heads of C1q with the Fc regions of IgG or IgM antibody present in immune complexes.

Note: This product is for in vitro research use only and is not intended for use in humans or animals.