

SHB Rabbit mAb

Catalog No: #57141



Package Size: #57141-1 50ul #57141-2 100ul

Orders: order@signalwayantibody.comSupport: tech@signalwayantibody.com

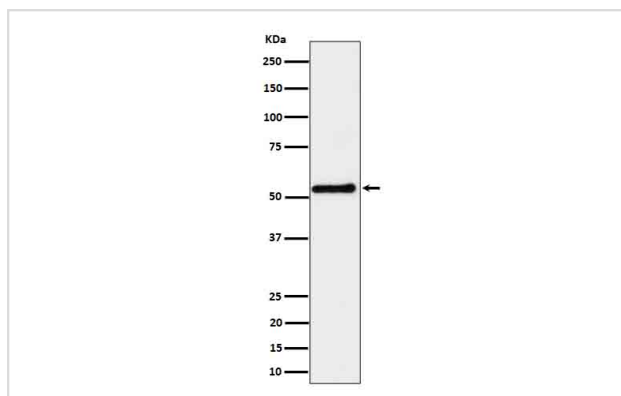
Description

Product Name	SHB Rabbit mAb
Host Species	Rabbit
Clonality	Monoclonal
Isotype	Rabbit IgG
Purification	Affinity-chromatography
Applications	WB
Species Reactivity	Human Mouse Rat
Specificity	SHB Antibody detects endogenous levels of total SHB
Immunogen Description	A synthesized peptide derived from human SHB
Other Names	Shb;
Accession No.	Q15464
Calculated MW	55kDa
Formulation	Rabbit IgG in phosphate buffered saline , pH 7.4, 150mM NaCl, 0.02% sodium azide and 50% glycerol.
Storage	Store at -20°C for long term preservation (recommended). Store at 4°C for short term use.

Application Details

WB 1:500~1:2000

Images



Western blot analysis of SHB expression in K562 cell lysate.

Background

Adapter protein which regulates several signal transduction cascades by linking activated receptors to downstream signaling components. May play a role in angiogenesis by regulating FGFR1, VEGFR2 and PDGFR signaling.

Note: This product is for in vitro research use only and is not intended for use in humans or animals.