

Ceruloplasmin Rabbit mAb

Catalog No: #57142

Package Size: #57142-1 50ul #57142-2 100ul

Orders: order@signalwayantibody.comSupport: tech@signalwayantibody.com

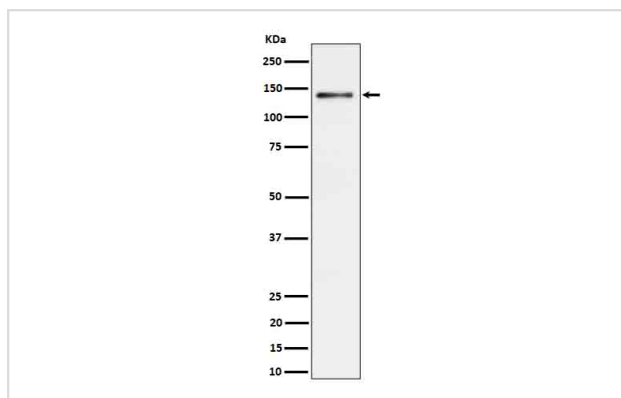
Description

Product Name	Ceruloplasmin Rabbit mAb
Host Species	Rabbit
Clonality	Monoclonal
Isotype	Rabbit IgG
Purification	Affinity-chromatography
Applications	WB
Species Reactivity	Human Rat
Specificity	Ceruloplasmin Antibody detects endogenous levels of total Ceruloplasmin
Immunogen Description	A synthesized peptide derived from human Ceruloplasmin
Other Names	Ceruloplasmin; CP2; Ferroxidase;
Accession No.	P00450
Calculated MW	140kDa
Formulation	Rabbit IgG in phosphate buffered saline , pH 7.4, 150mM NaCl, 0.02% sodium azide and 50% glycerol.
Storage	Store at -20°C for long term preservation (recommended). Store at 4°C for short term use.

Application Details

WB 1:500~1:2000

Images



Western blot analysis of Ceruloplasmin expression in Rat liver cell lysate.

Background

Ceruloplasmin is a blue, copper-binding (6-7 atoms per molecule) glycoprotein. It has ferroxidase activity oxidizing Fe(2+) to Fe(3+) without releasing radical oxygen species. It is involved in iron transport across the cell membrane.

Note: This product is for in vitro research use only and is not intended for use in humans or animals.