

## SEC62 Rabbit mAb

Catalog No: #57144



Package Size: #57144-1 50ul #57144-2 100ul

Orders: [order@signalwayantibody.com](mailto:order@signalwayantibody.com)Support: [tech@signalwayantibody.com](mailto:tech@signalwayantibody.com)

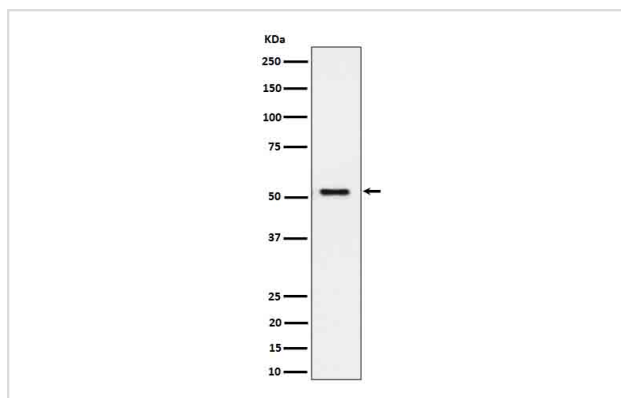
## Description

Product Name	SEC62 Rabbit mAb
Host Species	Rabbit
Clonality	Monoclonal
Isotype	Rabbit IgG
Purification	Affinity-chromatography
Applications	WB IHC ICC/IF
Species Reactivity	Human Mouse Rat
Specificity	SEC62 Antibody detects endogenous levels of total SEC62
Immunogen Description	A synthesized peptide derived from human SEC62
Other Names	Mouse, Rat, Human
Accession No.	Q99442
Calculated MW	50kDa
Formulation	Rabbit IgG in phosphate buffered saline , pH 7.4, 150mM NaCl, 0.02% sodium azide and 50% glycerol.
Storage	Store at -20°C for long term preservation (recommended). Store at 4°C for short term use.

## Application Details

WB 1:500~1:2000 IHC 1:50~1:200 ICC/IF 1:50~1:200

## Images



Western blot analysis of SEC62 expression in HeLa cell lysate.

## Background

Required for preprotein translocation.

---

Note: This product is for in vitro research use only and is not intended for use in humans or animals.