

## Fetuin B Rabbit mAb

Catalog No: #57146

Package Size: #57146-1 50ul #57146-2 100ul

Orders: [order@signalwayantibody.com](mailto:order@signalwayantibody.com)Support: [tech@signalwayantibody.com](mailto:tech@signalwayantibody.com)

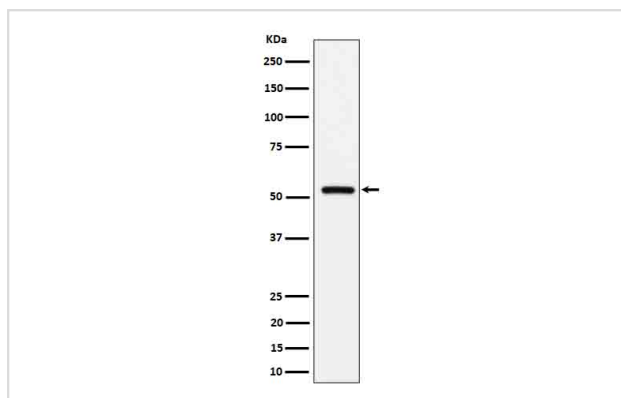
## Description

Product Name	Fetuin B Rabbit mAb
Host Species	Rabbit
Clonality	Monoclonal
Isotype	Rabbit IgG
Purification	Affinity-chromatography
Applications	WB IHC
Species Reactivity	Human Rat
Specificity	Fetuin B Antibody detects endogenous levels of total Fetuin B
Immunogen Description	A synthesized peptide derived from human Fetuin B
Other Names	Fet; Fetub; Fetuin beta; Gugu; Pp63;
Accession No.	Q9UGM5
Calculated MW	55kDa
Formulation	Rabbit IgG in phosphate buffered saline , pH 7.4, 150mM NaCl, 0.02% sodium azide and 50% glycerol.
Storage	Store at -20°C for long term preservation (recommended). Store at 4°C for short term use.

## Application Details

WB 1:500~1:2000 IHC 1:50~1:200

## Images



Western blot analysis of Fetuin B expression in human serum cell lysate.

## Background

Protease inhibitor required for egg fertilization. Required to prevent premature zona pellucida hardening before fertilization, probably by inhibiting the protease activity of ASTL, a protease that mediates the cleavage of ZP2 and triggers zona pellucida hardening (By similarity).

---

Note: This product is for in vitro research use only and is not intended for use in humans or animals.