

RAB22A Rabbit mAb

Catalog No: #57150

Package Size: #57150-1 50ul #57150-2 100ul

Orders: order@signalwayantibody.comSupport: tech@signalwayantibody.com

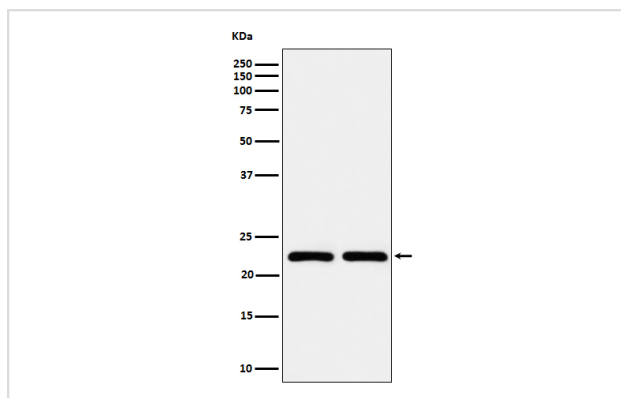
Description

Product Name	RAB22A Rabbit mAb
Host Species	Rabbit
Clonality	Monoclonal
Isotype	Rabbit IgG
Purification	Affinity-chromatography
Applications	WB ICC/IF IP
Species Reactivity	Human Mouse Rat
Specificity	RAB22A Antibody detects endogenous levels of total RAB22A
Immunogen Description	A synthesized peptide derived from human RAB22A
Other Names	Rab22; RAB22A;
Accession No.	Q9UL26
Calculated MW	22kDa
Formulation	Rabbit IgG in phosphate buffered saline , pH 7.4, 150mM NaCl, 0.02% sodium azide and 50% glycerol.
Storage	Store at -20°C for long term preservation (recommended). Store at 4°C for short term use.

Application Details

WB 1:500~1:2000 ICC/IF 1:50~1:200 IP 1:50

Images



Western blot analysis of RAB22A expression in (1) MCF-7 cell lysate; (2) BxPC-3 cell lysate.

Background

Plays a role in endocytosis and intracellular protein transport. Mediates trafficking of TF from early endosomes to recycling endosomes (PubMed:16537905).

References

Note: This product is for in vitro research use only and is not intended for use in humans or animals.