

## Lunatic Fringe Rabbit mAb

Catalog No: #57158



Package Size: #57158-1 50ul #57158-2 100ul

Orders: order@signalwayantibody.com

Support: tech@signalwayantibody.com

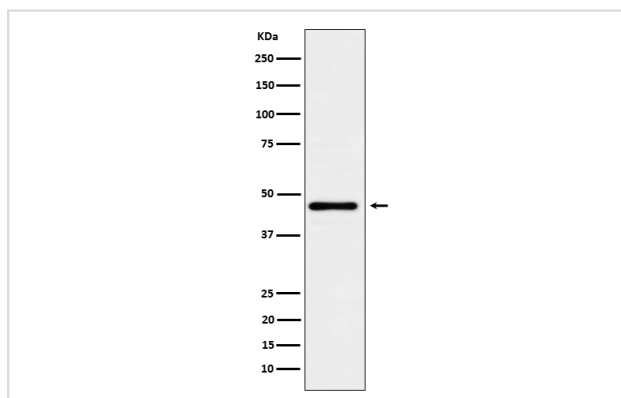
## Description

Product Name	Lunatic Fringe Rabbit mAb
Host Species	Rabbit
Clonality	Monoclonal
Isotype	Rabbit IgG
Purification	Affinity-chromatography
Applications	WB
Species Reactivity	Human Mouse Rat
Specificity	Lunatic Fringe Antibody detects endogenous levels of total Lunatic Fringe
Immunogen Description	A synthesized peptide derived from human Lunatic Fringe
Other Names	SCDO3;
Accession No.	Q8NES3
Calculated MW	42kDa
Concentration	1 mg/ml
Formulation	Rabbit IgG in phosphate buffered saline , pH 7.4, 150mM NaCl, 0.02% sodium azide and 50% glycerol.
Storage	Store at +4°C short term. Store at -20°C long term. Avoid freeze / thaw cycle.

## Application Details

WB 1:500~1:2000

## Images



Western blot analysis of Lunatic Fringe expression in HeLa cell lysate.

## Background

Glycosyltransferase that initiates the elongation of O-linked fucose residues attached to EGF-like repeats in the extracellular domain of Notch molecules.

---

Note: This product is for in vitro research use only and is not intended for use in humans or animals.