

CCL23 / MIP3 Rabbit mAb

Catalog No: #57164



Package Size: #57164-1 50ul #57164-2 100ul

Orders: order@signalwayantibody.com

Support: tech@signalwayantibody.com

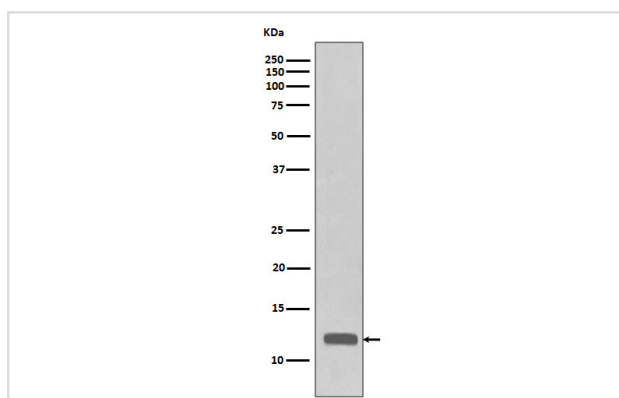
Description

Product Name	CCL23 / MIP3 Rabbit mAb
Host Species	Rabbit
Clonality	Monoclonal
Isotype	Rabbit IgG
Purification	Affinity-chromatography
Applications	WB IHC
Species Reactivity	Human
Specificity	CCL23 / MIP3 Antibody detects endogenous levels of total CCL23 / MIP3
Immunogen Description	A synthesized peptide derived from human CCL23 / MIP3
Other Names	C C motif chemokine ligand 23; C-C motif chemokine 23; C6 beta chemokine; CCL23; CCL23(30-99); Chemokine (C C motif) ligand 23; Chemokine CC motif ligand 23; ck beta 8; CKB8; Hmrp-2a; Macrophage inflammatory protein 3; MIP3; MPIF1; Myeloid progenitor inh
Accession No.	P55773
Calculated MW	13kDa
Concentration	1 mg/ml
Formulation	Rabbit IgG in phosphate buffered saline , pH 7.4, 150mM NaCl, 0.02% sodium azide and 50% glycerol.
Storage	Store at +4°C short term. Store at -20°C long term. Avoid freeze / thaw cycle.

Application Details

WB 1:500~1:2000 IHC 1:50~1:200

Images



Western blot analysis of CCL23 / MIP3 expression in recombinant protein cell lysate.

Background

Shows chemotactic activity for monocytes, resting T-lymphocytes, and neutrophils, but not for activated lymphocytes. Inhibits proliferation of myeloid progenitor cells in colony formation assays. This protein can bind heparin. Binds CCR1. CCL23(19-99), CCL23(22-99), CCL23(27-99), CCL23(30-99)

are more potent chemoattractants than the small-inducible cytokine A23.

Note: This product is for in vitro research use only and is not intended for use in humans or animals.