

ZN141 rabbit pAb

Catalog No: #48287



Package Size: #48287-1 50ul #48287-2 100ul

Orders: order@signalwayantibody.comSupport: tech@signalwayantibody.com

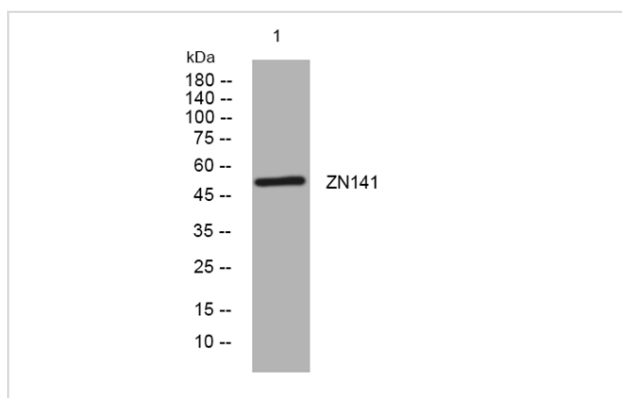
Description

| | |
|-----------------------|---|
| Product Name | ZN141 rabbit pAb |
| Host Species | Rabbit |
| Clonality | Polyclonal |
| Isotype | IgG |
| Purification | The antibody was affinity-purified from rabbit serum by affinity-chromatography using specific immunogen. |
| Applications | WB |
| Species Reactivity | Human;Rat;Mouse |
| Specificity | This antibody detects endogenous levels of ZN141 at Human |
| Immunogen Description | Synthesized peptide derived from human ZN141 |
| Calculated MW | 52kD |
| Concentration | 1 mg/ml |
| Formulation | Liquid in PBS containing 50% glycerol, 0.5% BSA and 0.02% sodium azide. |
| Storage | Store at -20°C/1 year |

Application Details

WB 1 μ O 500-2000

Images



Western blot analysis of lysates from DU145 cells, primary antibody was diluted at 1:1000, 4° over night

Note: This product is for in vitro research use only and is not intended for use in humans or animals.