

MSMO1 rabbit pAb

Catalog No: #48408



Package Size: #48408-1 50ul #48408-2 100ul

Orders: order@signalwayantibody.comSupport: tech@signalwayantibody.com

Description

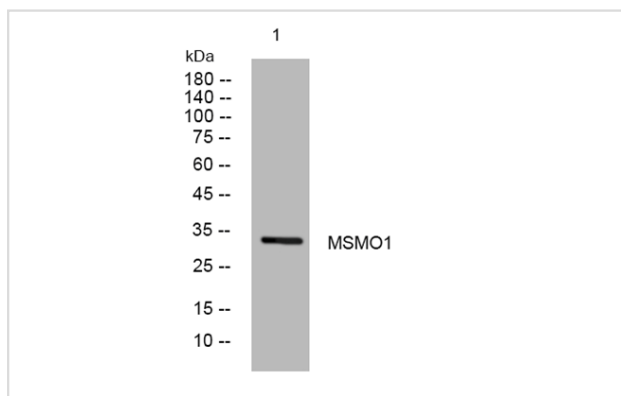
Product Name	MSMO1 rabbit pAb
Host Species	Rabbit
Clonality	Polyclonal
Isotype	IgG
Purification	The antibody was affinity-purified from rabbit serum by affinity-chromatography using specific immunogen.
Applications	WB;IHC
Species Reactivity	Human; Mouse;Rat
Specificity	This antibody detects endogenous levels of MSMO1 at Human/Mouse/Rat
Immunogen Description	Synthesized peptide derived from human MSMO1
Other Names	MSMO1
Calculated MW	32kD
Concentration	1mg/mL
Formulation	Liquid in PBS containing 50% glycerol, 0.5% BSA and 0.02% sodium azide.
Storage	Store at -20°C/1 year

Application Details

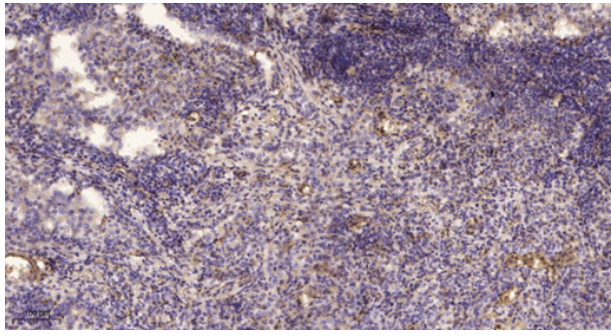
WB 1:500-2000;

IHC-p 1:50-300

Images



Western blot analysis of lysates from KB cells, primary antibody was diluted at 1:1000, 4° over night



Immunohistochemical analysis of paraffin-embedded human lung cancer.

Note: This product is for in vitro research use only and is not intended for use in humans or animals.