

# Recombinant Murine Interleukin-36 alpha, 160a.a.

Catalog No: #AP60167

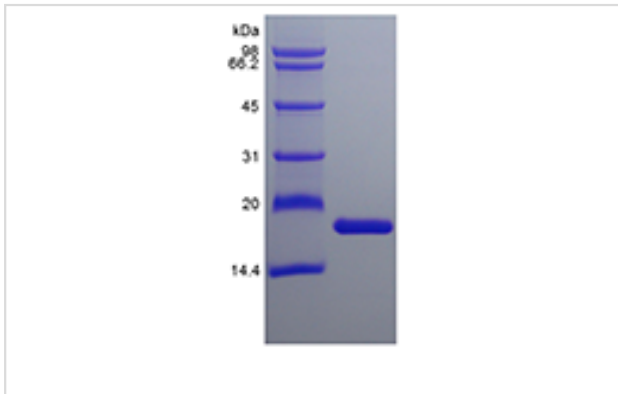
Package Size: #AP60167-1 10ug #AP60167-2 100ug #AP60167-3 500ug

Orders: [order@signalwayantibody.com](mailto:order@signalwayantibody.com)Support: [tech@signalwayantibody.com](mailto:tech@signalwayantibody.com)

## Description

Product Name	Recombinant Murine Interleukin-36 alpha, 160a.a.
Host Species	Escherichia coli.
Purification	> 95 % by SDS-PAGE and HPLC analyses.
Other Names	FIL1 epsilon, IL-1 epsilon, IL-1F6, IL-1H1
Calculated MW	Approximately 18.0 kDa, a single non-glycosylated polypeptide chain containing 160 amino acids.
Target Sequence	MNKEKELRAA SPSLRHVQDL SSRVWILQNN ILTAVPRKEQ TVPVTITLLP CQYLDLTLETN RGDPTYMGVQ RPMSCLFCTK DGEQPVQLQG EGNIMEMYNK KEPVKASLFY HKKSGTTSTF ESAAFPGWFI AVCSKGSCPL ILTQELGEIF ITDFEMIVVH
Formulation	Lyophilized from a 0.2 µm filtered concentrated solution in PBS, pH 7.4, 5 % trehalose.
Storage	Use a manual defrost freezer and avoid repeated freeze-thaw cycles. <ul style="list-style-type: none"> <li>-□ A minimum of 12 months from date of receipt, when stored at &amp;le;-20 °C as supplied.</li> <li>-□ 1 month, 2 to 8 °C under sterile conditions after reconstitution.</li> <li>-□ 3 months, -20 to -70 °C under sterile conditions after reconstitution.</li> </ul>

## Images



## Background

Interleukin-36 (IL-36) is a pro-inflammatory cytokine which plays an important role in the pathophysiology of several diseases. IL-36 $\alpha$ , IL-36 $\epsilon^{\sim}$ Y, and IL-36 $\eta^{\sim}$ 1 $\rightarrow$  (formerly IL-1F6, IL-1F8, and IL-1F9) are IL-1 family members that signal through the IL-1 receptor family members IL-1Rrp2 (IL-1RL2) and IL-1RAcP. IL-36 $\alpha$  is mainly found in skin and lymphoid tissues, but also in fetal brain, trachea, stomach and intestine. It is expressed by monocytes, B and T cells. Notably, IL-36 alpha is the only novel IL-1 family member expressed on T-cells. Recombinant murine interleukin-36 alpha contains 160 amino acids residues which is a single non-glycosylated polypeptide. Specifically, mouse IL-36 $\alpha$  shares 83 % a.a. sequence identity with rat IL-36 $\alpha$ , 54-60 % with human, rabbit, equine and bovine IL-36 $\alpha$ .

Note: This product is for in vitro research use only and is not intended for use in humans or animals.