

Recombinant Murine Interleukin-36 beta, 153a.a.

Catalog No: #AP60170

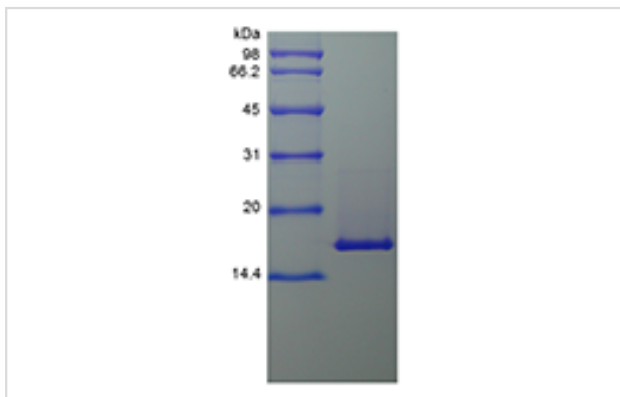
Package Size: #AP60170-1 10ug #AP60170-2 100ug #AP60170-3 500ug

Orders: order@signalwayantibody.comSupport: tech@signalwayantibody.com

Description

Product Name	Recombinant Murine Interleukin-36 beta, 153a.a.
Host Species	Escherichia coli.
Purification	> 97 % by SDS-PAGE and HPLC analyses.
Other Names	FIL1 eta, IL-1 eta, IL-1F8, IL-1H2
Calculated MW	Approximately 17.4 kDa, a single non-glycosylated polypeptide chain containing 153 amino acids.
Target Sequence	SSQSPRNYRV HDSQQMVVWL TGNTLTAVPA SNNVKPVILS LIACRDTEFQ DVKKGNLVLFL GIKNRNLCFC CVEMEGKPTL QLKEVDIMNL YKERKAQKAF LFYHGIEGST SVFQSVLYPG WFIATSSIER QTIILTHQRG KLVNTNFIYE SEK
Formulation	Lyophilized from a 0.2 µm filtered concentrated solution in PBS, pH 7.4, 5% trehalose.
Storage	Use a manual defrost freezer and avoid repeated freeze-thaw cycles. <input type="checkbox"/> A minimum of 12 months from date of receipt, when stored at ≤-20 °C as supplied. <input type="checkbox"/> 1 month, 2 to 8 °C under sterile conditions after reconstitution. <input type="checkbox"/> 3 months, -20 to -70 °C under sterile conditions after reconstitution.

Images



Background

Interleukin-36 is a pro-inflammatory cytokine which plays an important role in the pathophysiology of several diseases. IL-36 α , IL-36 ϵ^{Y} , and IL-36 η^{1} (formerly IL-1F6, IL-1F8, and IL-1F9) are IL-1 family members that signal through the IL-1 receptor family members IL-1Rrp2 (IL-1RL2) and IL-1RAcP. IL-36 beta is reported to be expressed at higher levels in psoriatic plaques than in symptomless psoriatic skin or healthy control skin and it can stimulate production of interleukin-6 and interleukin-8 in synovial fibroblasts, articular chondrocytes and mature adipocytes. IL-36 beta has two isoforms. IL-36 $\epsilon^{\text{Y}2}$ contains one potential N-linked glycosylation site in its C-terminus, while IL-36 ϵ^{Y} isoform 1 lacks potential N-linked glycosylation sites and four of the conserved ϵ^{Y} -strands. Within the IL-1 family, IL-36 ϵ^{Y} /IL-1F8 shares 30 %, 32 %, 37 %, 46 %, 34 %, 45 % and 28 % a.a. sequence identity with IL-1 ra, IL-1 ϵ^{Y} , IL-36Ra/IL-1F5, IL-36 α /IL-1F6, IL-37/IL-1F7, IL-36 η^{1} /IL-1F9 and IL-1F10, respectively.

Note: This product is for in vitro research use only and is not intended for use in humans or animals.