

Recombinant Canine Interleukin-8/CXCL8

Catalog No: #AP60218

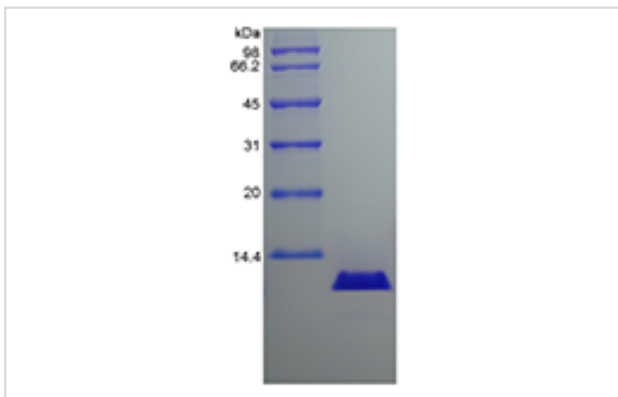
Package Size: #AP60218-1 5ug #AP60218-2 100ug #AP60218-3 500ug

Orders: order@signalwayantibody.comSupport: tech@signalwayantibody.com

Description

Product Name	Recombinant Canine Interleukin-8/CXCL8
Host Species	Escherichia coli.
Purification	> 95 % by SDS-PAGE and HPLC analyses.
Other Names	(Ser-IL-8)72, GCP/IL-8 protein I, IL8/NAP1 form III, LYNAP, MDNCF-c, NAF
Calculated MW	Approximately 9.1 kDa, a single non-glycosylated polypeptide chain containing 79 amino acids.
Target Sequence	AVLSRVSSEL RCQCIKTHST PFHPKYIKEL RVIDSGPHCE NSEIIVKLFN GNEVCLDPKE KVVQKVVQIF LKKAEKQDP
Formulation	Lyophilized from a 0.2 µm filtered concentrated solution in 2 x PBS, pH 7.4.
Storage	Use a manual defrost freezer and avoid repeated freeze-thaw cycles. <ul style="list-style-type: none"> -□ A minimum of 12 months from date of receipt, when stored at &le;-20 °C as supplied. -□ 1 month, 2 to 8 °C under sterile conditions after reconstitution. -□ 3 months, -20 to -70 °C under sterile conditions after reconstitution.

Images



Background

Interleukin-8 (IL-8) is encoded by the IL8 gene and produced by macrophages and other cell types such as epithelial cells. It is also synthesized by endothelial cells, which store IL-8 in their storage vesicles. There are many receptors capable to bind IL-8, the most affinity to IL-8 are receptors CXCR1, and CXCR2. As a member of the CXC chemokine family, function of IL-8 is the induction of chemotaxis in its target cells, like neutrophil granulocytes, basophils, and T-cells. IL-8 is often associated with inflammation and has been cited as a proinflammatory mediator in gingivitis and psoriasis.

Note: This product is for in vitro research use only and is not intended for use in humans or animals.