

Recombinant Porcine Interleukin-1 beta

Catalog No: #AP60269

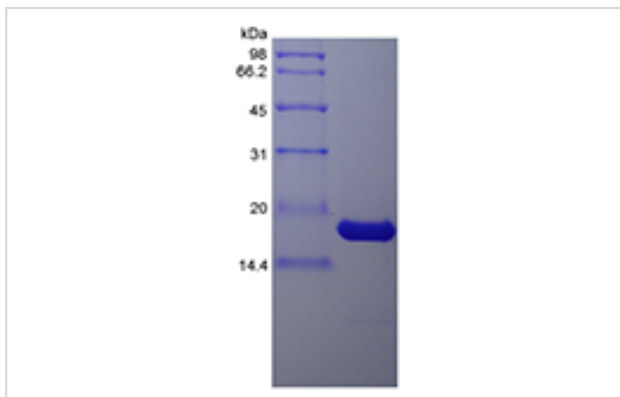
Package Size: #AP60269-1 10ug #AP60269-2 100ug #AP60269-3 500ug

Orders: order@signalwayantibody.comSupport: tech@signalwayantibody.com

Description

Product Name	Recombinant Porcine Interleukin-1 beta
Host Species	Escherichia coli.
Purification	> 95 % by SDS-PAGE and HPLC analyses.
Other Names	IL-1 beta
Calculated MW	Approximately 17.6 kDa, a single non-glycosylated polypeptide chain containing 153 amino acids.
Target Sequence	ANVQSMECKL QDKDHLKSLVL AGPHMLKALH LLTGDLKREV VFCMSFVQGD DSNKIPVTL GIKGKNLYLS CVMKDNTPTL QLEDIDPKRY PKRDMEKRFV FYKTEIKNRV EFESALYPNW YISTSQAEQK PVFLGNSKGR QDITDFTMEV LSP
Formulation	Lyophilized from a 0.2 µm filtered concentrated solution in PBS, pH 7.4, 3 % trehalose.
Storage	Use a manual defrost freezer and avoid repeated freeze-thaw cycles. <input type="checkbox"/> A minimum of 12 months from date of receipt, when stored at ≤-20 °C as supplied. <input type="checkbox"/> 1 month, 2 to 8 °C under sterile conditions after reconstitution. <input type="checkbox"/> 3 months, -20 to -70 °C under sterile conditions after reconstitution.

Images



Background

Interleukin-1 beta (IL-1 ϵ^{\sim} Y) is a non-secreted proinflammatory cytokine produced mainly by activated macrophages, as well as neutrophils, epithelial cells, and endothelial cells. It possesses metabolic, physiological, haematopoietic activities, and plays one of the central roles in the regulation of the immune responses. Both IL-1 α and IL-1 ϵ^{\sim} Y binds to the same receptor and has similar but not identical biological properties. Recombinant porcine interleukin-1 beta is a 17 kDa protein containing 153 amino acid residues and it shares 63 % - 70 % a.a. sequence identity with canine, cotton rat, equine, feline, human, mouse, rat, and rhesus IL-1 ϵ^{\sim} Y.

Note: This product is for in vitro research use only and is not intended for use in humans or animals.