

# Recombinant Equine Interleukin-1 beta

Catalog No: #AP60273

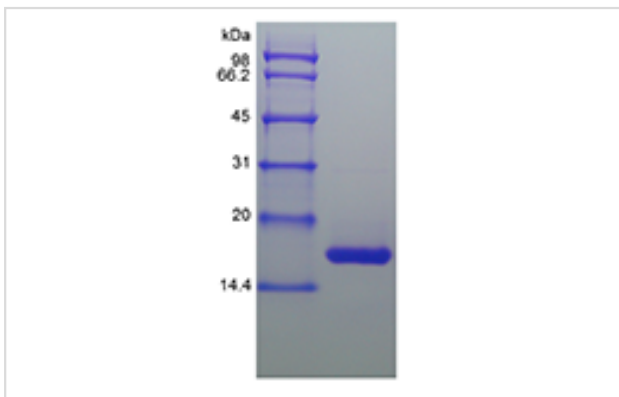
Package Size: #AP60273-1 10ug #AP60273-2 100ug #AP60273-3 500ug

Orders: [order@signalwayantibody.com](mailto:order@signalwayantibody.com)Support: [tech@signalwayantibody.com](mailto:tech@signalwayantibody.com)

## Description

|                 |  |
|-----------------|--|
| Product Name    | Recombinant Equine Interleukin-1 beta  |
| Host Species    | Escherichia coli.  |
| Purification    | > 95 % by SDS-PAGE and HPLC analyses.  |
| Other Names     | IL-1 beta  |
| Calculated MW   | Approximately 17.3 kDa, a single non-glycosylated polypeptide chain containing 153 amino acids.  |
| Target Sequence | AAMHSVNCRL RDIYHKSLVL SGACELQAVH LNGENTNQQV VFCMSFVQGE EETDKIPVAL GLKEKNLYLS<br>CGMKDGGKPTL QLETVDPTY PKRKMEKRFV FNKMEIKGNV EFESAMYPNW YISTSQAEKS<br>PVFLGNTRGG RDITDFIMEI TSA   |
| Formulation     | Lyophilized from a 0.2 µm filtered concentrated solution in 1 x PBS, pH 7.4, 0.1 % Tween-80.   |
| Storage         | Use a manual defrost freezer and avoid repeated freeze-thaw cycles.<br><input type="checkbox"/> A minimum of 12 months from date of receipt, when stored at &le;-20 °C as supplied.<br><input type="checkbox"/> 1 month, 2 to 8 °C under sterile conditions after reconstitution.<br><input type="checkbox"/> 3 months, -20 to -70 °C under sterile conditions after reconstitution. |

## Images



## Background

Interleukin-1 beta (IL-1 $\epsilon^{\circ}$ Y) is a non-secreted proinflammatory cytokine produced mainly by activated macrophages, as well as neutrophils, epithelial cells, and endothelial cells. It possesses metabolic, physiological, haematopoietic activities, and plays one of the central roles in the regulation of the immune responses. Both IL-1 $\alpha$  and IL-1 $\epsilon^{\circ}$ Y binds to the same receptor and has similar but not identical biological properties. Recombinant equine interleukin-1 beta is a 17 kDa protein containing 153 amino acid residues and it shares 63 %~70 % a.a. sequence identity with canine, cotton rat, porcine, feline, human, mouse, rat, and rhesus IL1 $\epsilon^{\circ}$ Y.

Note: This product is for in vitro research use only and is not intended for use in humans or animals.