

Recombinant Human I-309/CCL1

Catalog No: #AP60295

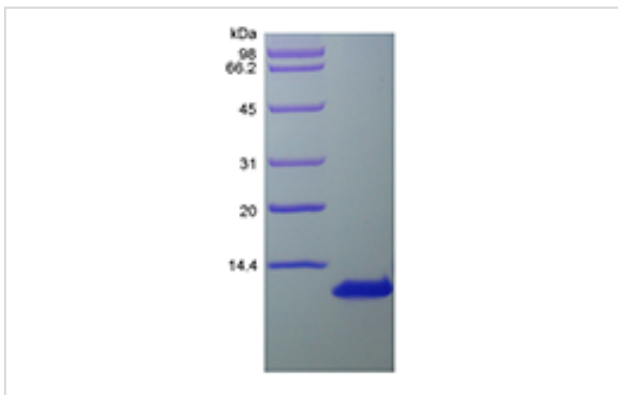
Package Size: #AP60295-1 10ug #AP60295-2 100ug #AP60295-3 500ug

Orders: order@signalwayantibody.comSupport: tech@signalwayantibody.com

Description

Product Name	Recombinant Human I-309/CCL1
Host Species	Escherichia coli.
Purification	>97% by SDS-PAGE and HPLC analyses.
Other Names	Small-inducible cytokine A1, T lymphocyte-secreted protein I-309
Calculated MW	Approximately 8.6 kDa, a single, non-glycosylated polypeptide chain containing 74 amino acids.
Target Sequence	SKSMQVPFSR CCFSFAEQEI PLRAILCYRN TSSICSNEGL IFKLKRGKEA CALDTVGWVQ RHRKMLRHCP SKRK
Formulation	Lyophilized from a 0.2 µm filtered concentrated solution in 20 mM PB, pH 7.4, 100 mM NaCl.
Storage	Use a manual defrost freezer and avoid repeated freeze-thaw cycles. <ul style="list-style-type: none"> -□ A minimum of 12 months from date of receipt, when stored at &le;-20 °C as supplied. -□ 1 month, 2 to 8 °C under sterile conditions after reconstitution. -□ 3 months, -20 to -70 °C under sterile conditions after reconstitution.

Images



Background

Chemokine (C-C motif) ligand 1 (CCL1) belongs to a family inflammatory cytokines and also known as chemokines. It is a small glycoprotein secreted by activated T cells with a molecular weight of approximately 8.5 kDa. CCL1 attracts monocytes, NK cells, and immature B cells and dendritic cells by interacting with a cell surface chemokine receptor called CCR8. Human CCL1 has been assumed to be a homologue of the mouse TCA3. While the two proteins share only approximately 42 % amino acid sequence identity, both chemokines contain an extra pair of cysteine residues not found in most other chemokines.

Note: This product is for in vitro research use only and is not intended for use in humans or animals.