

# Recombinant Human Lymphocyte Activation Gene 1 Protein/CCL4L1

Catalog No: #AP60300

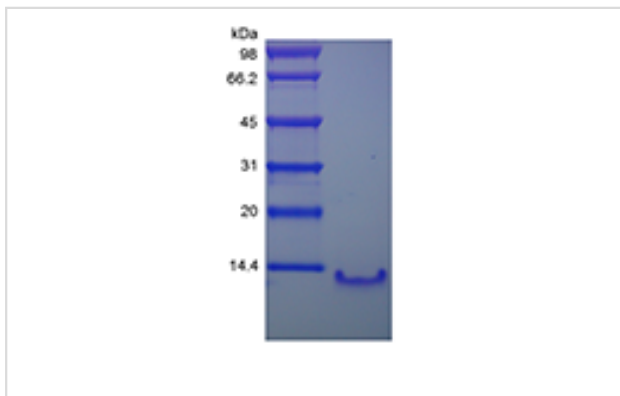
Orders: [order@signalwayantibody.com](mailto:order@signalwayantibody.com)Support: [tech@signalwayantibody.com](mailto:tech@signalwayantibody.com)

Package Size: #AP60300-1 5ug #AP60300-2 100ug #AP60300-3 500ug

## Description

|                 |  |
|-----------------|--|
| Product Name    | Recombinant Human Lymphocyte Activation Gene 1 Protein/CCL4L1  |
| Host Species    | Escherichia coli.  |
| Purification    | > 97 % by SDS-PAGE and HPLC analyses.  |
| Calculated MW   | Approximately 7.8 kDa, a single non-glycosylated polypeptide chain containing 69 amino acids.  |
| Target Sequence | APMGSDPPTA CCFSYTARKL PRNFVVDYYE TSSLCSQPAV VFQTKRGKQV CADPSESWVQ EYVYDLELN  |
| Formulation     | Lyophilized from a 0.2 µm filtered concentrated solution in PBS.   |
| Storage         | Use a manual defrost freezer and avoid repeated freeze-thaw cycles.<br><input type="checkbox"/> A minimum of 12 months from date of receipt, when stored at &le;-20 °C as supplied.<br><input type="checkbox"/> 1 month, 2 to 8 °C under sterile conditions after reconstitution.<br><input type="checkbox"/> 3 months, -20 to -70 °C under sterile conditions after reconstitution. |

## Images



Note: This product is for in vitro research use only and is not intended for use in humans or animals.