

Recombinant Human Macrophage Inflammatory Protein-5/CCL15

Catalog No: #AP60308

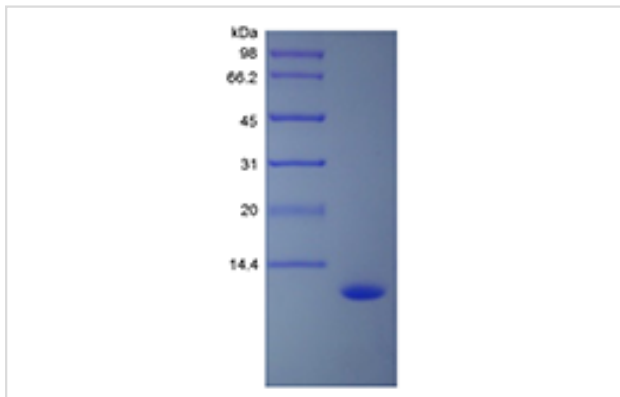
Package Size: #AP60308-1 5ug #AP60308-2 100ug #AP60308-3 500ug

Orders: order@signalwayantibody.comSupport: tech@signalwayantibody.com

Description

Product Name	Recombinant Human Macrophage Inflammatory Protein-5/CCL15
Host Species	E.coli
Purification	> 97 % by SDS-PAGE and HPLC analyses.
Other Names	C-C Motif Chemokine 15, LKN-1, Mrp-2b, NCC-3, Small-inducible Cytokine A15
Calculated MW	Approximately 10.2 kDa, a single non-glycosylated polypeptide chain containing 92 amino acids.
Target Sequence	QFINDAETEL MMSKLPLENP VVLNSFHFAA DCCTSYISQS IPCSLMKSYF ETSSECSKPG VIFLTKKGRQ VCAKPSGPGV QDCMKKLPY SI
Formulation	LyophilizedB fromB aB 0.2B umB filteredB concentratedB solutionB inB PBS.B
Storage	Use a manual defrost freezer and avoid repeated freeze-thaw cycles. -□A minimum of 12 months from date of receipt, when stored at ≤-20 °C as supplied. -□1 month, 2 to 8 °C under sterile conditions after reconstitution. -□3 months, -20 to -70 °C under sterile conditions after reconstitution.

Images



Background

Human CCL15 is belonging to the CC chemokine family and shares 35 % amino acid homology with human HCC1 (CCL14). CCL15 is most abundant in heart, skeletal muscle and adrenal gland, and low expressed in liver, small intestine, colon, and in certain leukocytes and macrophages of the lung. It is chemotactic for neutrophils, monocytes, and lymphocytes and elicits its effects by binding to cell surface chemokine receptors like CCR1 and CCR3. CCL15 has several cleaved chains. All of them are more potent chemoattractants than CCL15.

Note: This product is for in vitro research use only and is not intended for use in humans or animals.