

Recombinant Murine Macrophage Inflammatory Protein-1 gamma/CCL9/CCL10

Catalog No: #AP60351

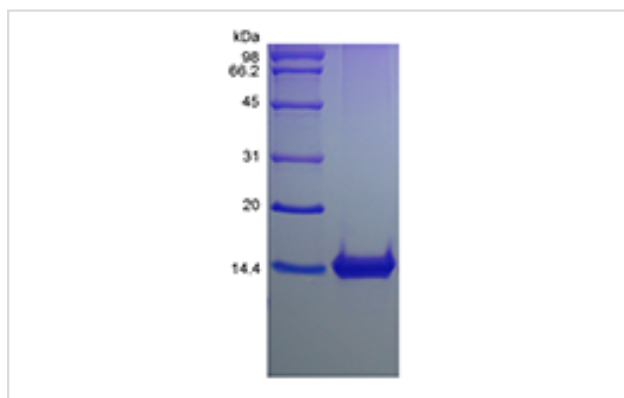
Package Size: #AP60351-1 5ug #AP60351-2 100ug #AP60351-3 500ug

Orders: order@signalwayantibody.comSupport: tech@signalwayantibody.com

Description

Product Name	Recombinant Murine Macrophage Inflammatory Protein-1 gamma/CCL9/CCL10
Host Species	Escherichia coli.
Purification	> 95 % by SDS-PAGE and HPLC analyses.
Other Names	MIP-1-gamma, MRP-2, Small-inducible Cytokine A9
Calculated MW	Approximately 11.6 kDa, a single non-glycosylated polypeptide chain containing 101 amino acids.
Target Sequence	QITHATETKE VQSSLKAQQG LEIEMFHMFGF QDSSDCCLSY NSRIQCSRFI GYFPTSGGCT RPGIIFISKR GFQVCANPSD RRVQRCIERL EQNSQPRTYK Q
Formulation	Lyophilized from a 0.2 µm filtered concentrated solution in PBS, pH 7.4.
Storage	Use a manual defrost freezer and avoid repeated freeze-thaw cycles. <ul style="list-style-type: none"> -□ A minimum of 12 months from date of receipt, when stored at &le;-20 °C as supplied. -□ 1 month, 2 to 8 °C under sterile conditions after reconstitution. -□ 3 months, -20 to -70 °C under sterile conditions after reconstitution.

Images



Background

Murine CCL9/10 is belonging to the CC chemokine family. It is encoded by the gene CCL9. MRP-2 (CCL9/10) was isolated from a murine macrophage cell line, RAW 264.7. MRP-2 shows a 51 % sequence identity at the protein level to MRP-1 (C10) and 46% identity to MIP-1-alpha (CCL3). The functional receptor for CCL9/10 has been identified as CCR1. In contrast, other CCR1 ligands, CCL3/MIP-1alpha and CCL5/RANTES are considered to be primary CCR1 ligands in inflammatory responses. CCL9 can activate osteoclasts suggesting an important role for it in bone resorption. Murine CCL9/10 is 75 % amino acid identical to rat CCL9/10.

Note: This product is for in vitro research use only and is not intended for use in humans or animals.