

Recombinant Murine Macrophage-Derived Chemokine/CCL22

Catalog No: #AP60358

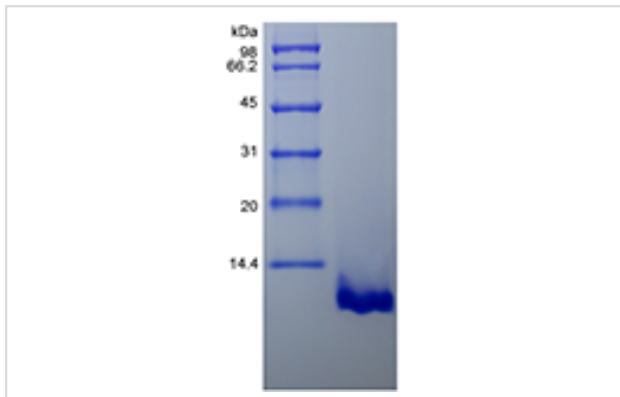
Package Size: #AP60358-1 5ug #AP60358-2 100ug #AP60358-3 500ug

Orders: order@signalwayantibody.comSupport: tech@signalwayantibody.com

Description

| | |
|-----------------|---|
| Product Name | Recombinant Murine Macrophage-Derived Chemokine/CCL22 |
| Host Species | Escherichia coli |
| Purification | > 97% by SDS-PAGE analyses. |
| Other Names | STCP-1, MDC (1-69), Macrophage-derived Chemokine |
| Calculated MW | Approximately 7.8 kDa, a single, non-glycosylated polypeptide chain containing 68 amino acids. |
| Target Sequence | GPYGANVEDS ICCQDYIRHP LPSRLVKEFF WTSKSCRKPG VVLITVKNRD ICADPRQVWV KKLLHKLS |
| Formulation | Lyophilized from a 0.2 µm filtered concentrated solution in 2xPBS, 5% Trehalose, 0.02% Tween-20, pH 7.0. |
| Storage | Use a manual defrost freezer and avoid repeated freeze-thaw cycles. <ul style="list-style-type: none"> -□ A minimum of 12 months from date of receipt, when stored at &le;-20 °C as supplied. -□ 1 month, 2 to 8 °C under sterile conditions after reconstitution. -□ 3 months, -20 to -70 °C under sterile conditions after reconstitution. |

Images



Background

CCL22 is a protein that in mouse is encoded by the CCL22 gene, which locates on the Chr. 8. It is highly expressed in macrophage, monocyte-derived dendritic cell and thymus, additionally, also detected in the tissues of thymus, lymph node and appendix. CCL22 can bind to CCR4, and is a chemoattractant for monocytes, monocyte-derived dendritic cells, and natural killer cells, but not for neutrophils, eosinophils, and resting T-lymphocytes. After secreted from monocyte-derived dendritic cells, the protein can be proteolytic cleaved into three forms: MDC (3-69), MDC (5-69), MDC (7-69).

Note: This product is for in vitro research use only and is not intended for use in humans or animals.