

# Recombinant Rat gamma-Interferon Inducible Protein 10/CXCL10

Catalog No: #AP60370

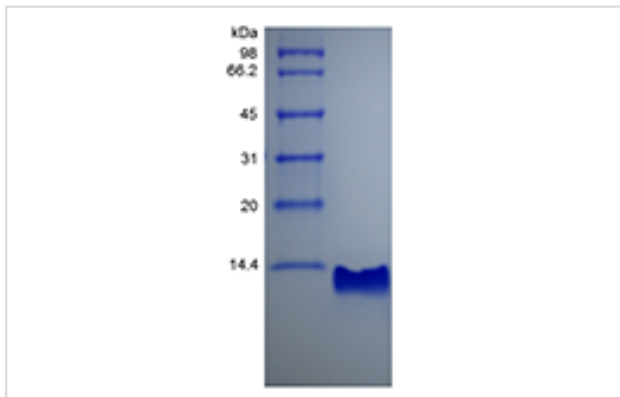
Orders: [order@signalwayantibody.com](mailto:order@signalwayantibody.com)Support: [tech@signalwayantibody.com](mailto:tech@signalwayantibody.com)

Package Size: #AP60370-1 5ug #AP60370-2 100ug #AP60370-3 500ug

## Description

Product Name	Recombinant Rat gamma-Interferon Inducible Protein 10/CXCL10
Host Species	Escherichia coli.
Purification	> 95 % by SDS-PAGE and HPLC analyses.
Other Names	Gamma-IP10, Small-inducible Cytokine B10, Protein Mob-1
Calculated MW	Approximately 8.7 kDa, a single non-glycosylated polypeptide chain containing 77 amino acids.
Target Sequence	IPLARTVRCT CIDFHEQPLR PRAIGKLEII PASLSCPHVE IIATMKKNNE KRCLNPESEA IKSLKAVSQ RRSKRAP
Formulation	Lyophilized from a 0.2 µm filtered concentrated solution in PBS, pH 7.4.
Storage	Use a manual defrost freezer and avoid repeated freeze-thaw cycles. <ul style="list-style-type: none"> <li>-□ A minimum of 12 months from date of receipt, when stored at &amp;le;-20 °C as supplied.</li> <li>-□ 1 month, 2 to 8 °C under sterile conditions after reconstitution.</li> <li>-□ 3 months, -20 to -70 °C under sterile conditions after reconstitution.</li> </ul>

## Images



## Background

CXCL10 also known as IP-10 is belonging to the CXC chemokine family. It is encoded by the CXCL10 gene, and in rat it is also named the Mob-1 gene. This gene was identified on the basis of differential expression in rat embryo fibroblasts. CXCL10 elicits its effects by binding to the cell surface chemokine receptor CXCR3. CXCL10 has been shown to be a chemoattractant for activated T-lymphocytes and monocytes/macrophages. It also has other roles, such as promotion of T cell adhesion to endothelial cells, and inhibition of bone marrow colony formation and angiogenesis. Rat CXCL10 shares approximately 68 % amino acid sequence identity with human CXCL10.

Note: This product is for in vitro research use only and is not intended for use in humans or animals.