

Recombinant Rat Prolactin

Catalog No: #AP60406

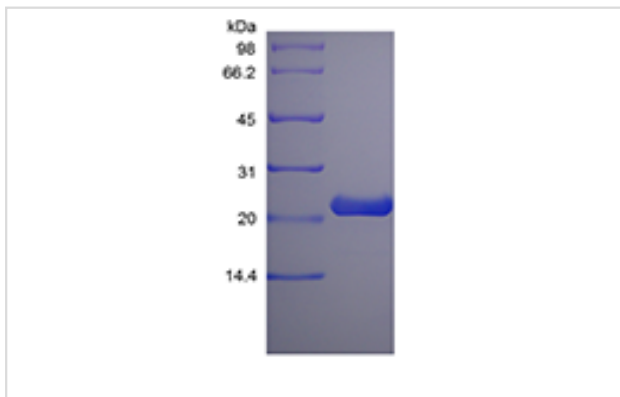
Package Size: #AP60406-1 10ug #AP60406-2 100ug #AP60406-3 500ug

Orders: order@signalwayantibody.comSupport: tech@signalwayantibody.com

Description

Product Name	Recombinant Rat Prolactin
Host Species	Escherichia coli.
Purification	> 98 % by SDS-PAGE and HPLC analyses.
Calculated MW	Approximately 22.6 kDa, a single non-glycosylated polypeptide chain containing 197 amino acids.
Target Sequence	LPVCSGGDCQ TPLPELFDRV VMLSHYIHTL YTDMFIEFDK QYVQDREFIA KAINDCPTSS LATPEDKEQA QKVPPEVLLN LILSLVHSWN DPLFQLITGL GGIHEAPDAI ISRAKEIEEQ NKRLELEGIEK IISQAYPEAK GNEIYLVWSQ LPSLQGVDEE SKDLAFYNNI RCLRRDSHKV DNYLKFLRCQ IVHKNNC
Formulation	Lyophilized from a 0.2 µm filtered concentrated solution in PBS, pH 7.4.
Storage	Use a manual defrost freezer and avoid repeated freeze-thaw cycles. <ul style="list-style-type: none"> -□ A minimum of 12 months from date of receipt, when stored at &le;-20 °C as supplied. -□ 1 month, 2 to 8 °C under sterile conditions after reconstitution. -□ 3 months, -20 to -70 °C under sterile conditions after reconstitution.

Images



Note: This product is for in vitro research use only and is not intended for use in humans or animals.