

Recombinant Human UBE2I/UBC9 Protein, His

Catalog No: #AP60437

Package Size: #AP60437-1 10ug #AP60437-2 100ug #AP60437-3 500ug

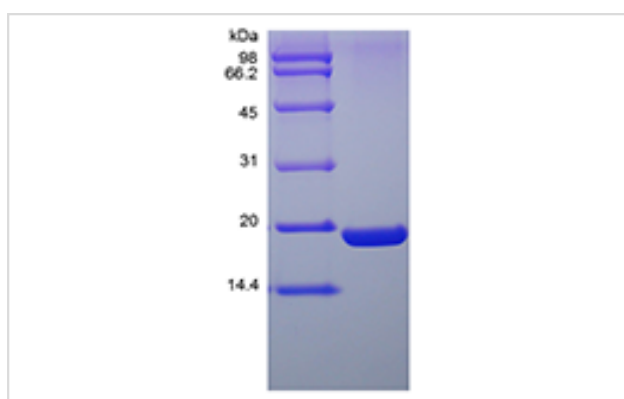
Orders: order@signalwayantibody.com

Support: tech@signalwayantibody.com

Description

Product Name	Recombinant Human UBE2I/UBC9 Protein, His
Host Species	Escherichia coli.
Purification	> 95 % by SDS-PAGE and HPLC analyses.
Other Names	SUMO-protein Ligase, Ubiquitin Carrier Protein 9, Ubiquitin Carrier Protein I, Ubiquitin-conjugating Enzyme E2 I, Ubiquitin-protein Ligase I, p18
Calculated MW	Approximately 19.5 kDa, a single non-glycosylated polypeptide chain containing 158 amino acids (a.a.) of human UBE2I/UBC9 and 8 a.a. vector sequence including 6 x His tag at N-terminus.
Target Sequence	MHHHHHHAMG TLNMSGIALS RLAQERKAWR KDHPFGFVAV PTKNPDGTMN LMNWECAIPG KKGTPWEGGL FKLRLFKDD YPSSPKCKF EPPLFHPNVY PSGTVCLSIL EEDKDWRPAI TIKQILLGIQ ELLNEPNIQD PAQAEAYTIY CQNRVEYEKR VRAQAKKFAP S
Formulation	A 0.2 µm filtered concentrated solution in 50 mM HEPES, pH 7.6, with 125 mM NaCl, 10 % Glycerol, 1 mM DTT.
Storage	Use a manual defrost freezer and avoid repeated freeze-thaw cycles. -□ A minimum of 12 months from date of receipt, when stored at ≤-20 °C as supplied. -□ 1 month, 2 to 8 °C under sterile conditions after reconstitution. -□ 3 months, -20 to -70 °C under sterile conditions after reconstitution.

Images



Background

Ubiquitin-conjugating Enzyme E2 I (UBE2I), also known as Ubiquitin-conjugating Enzyme 9 (UBC9) belongs to the ubiquitin-conjugating enzyme family and is encoded by the UBE2I gene in humans. The ubiquitin-conjugating enzymes, also known as E2 enzymes and more rarely as ubiquitin-carrier enzymes, take part in the second step in the ubiquitination reaction. In this reaction, E1 activates the ubiquitin by covalently attaching the molecule to its active site cysteine residue. The activated ubiquitin is then transferred to an E2 cysteine and then the E2 molecule binds E3 via a structurally conserved binding region. The UBE2I/UBC9 accepts the ubiquitin-like proteins SUMO1-4 from the UBLE1A-UBLE1B E1 complex and catalyzes their covalent attachment to other proteins with the help of an E3 ligase such as RANBP2 or CBX4. Additionally, it takes parts in catalysis the formation of poly-SUMO chains, sumoylation of FOXL2 and KAT5, and the segregation of nuclear architecture and chromosome.

Note: This product is for in vitro research use only and is not intended for use in humans or animals.